

Data Retrieval Statistics by Location

Shows how each site performed for each year it has been in service. The green highlight on the title bar indicates this is a land-grant institution.

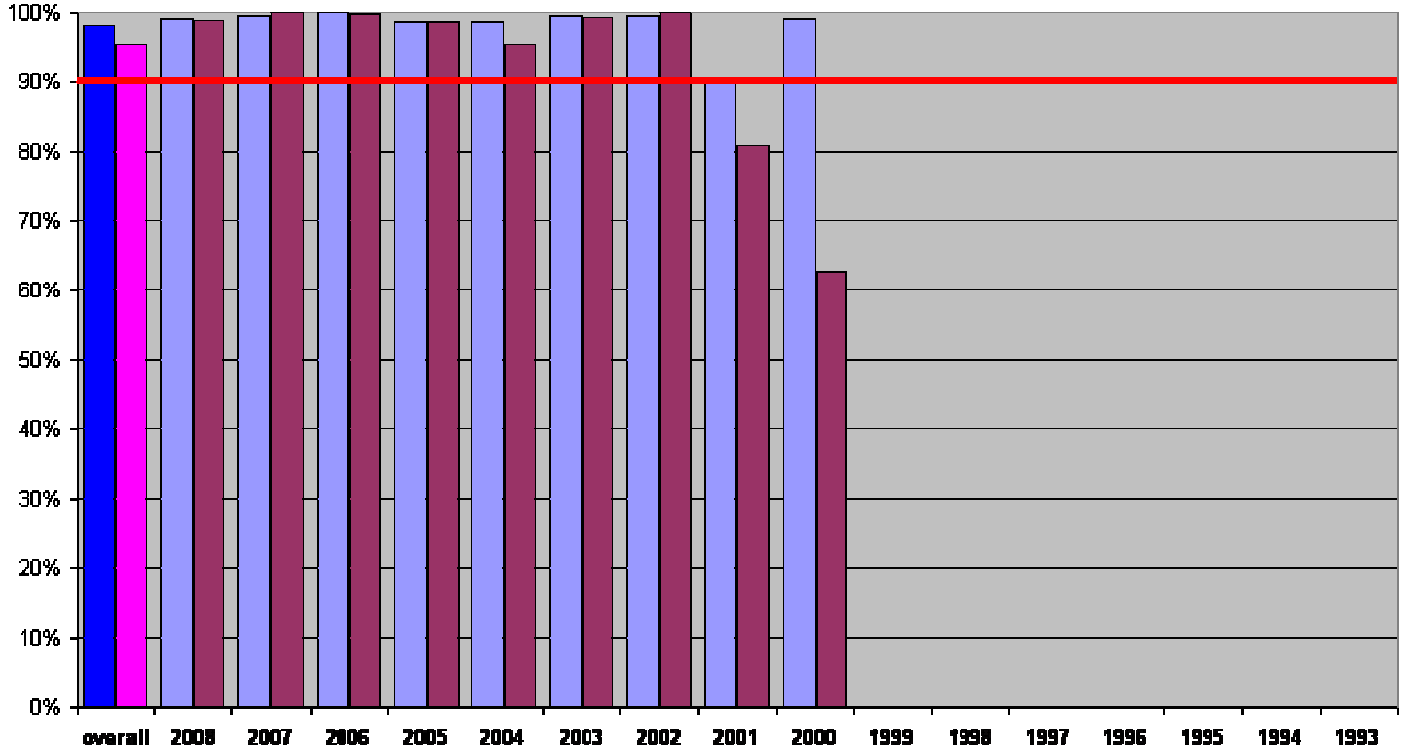
The percentages are computed by determining how many records are in the database versus how many records could be in the database if there were no interruptions to the operation of the instrument. By design, the climatological instruments operate 24/7/365 continuously, and only shut down for brief resets of the time sync or for replacement of sensors (for annual calibration). Longer gaps in data occur when there are prolonged problems with the communication system or during extended power outages, which sometimes occur over weekends or holiday seasons when no one is available to correct the problem. Times when an instrument is not physically present at the site (such as when the site is physically moved to another location) are excluded from the calculations. If the instrument is in place, but we cannot communicate with it to download the data, or it is in a halted state for some reason, then those time periods are included in the calculations. Research sites are excluded from these charts because they are typically of short or intermittent durations, except for TX31 and NASA's instrument, which are in continuous use for research.

TX31 is a vis-MFRSR instrument owned by Forrest Mims that uses LED's instead of photodiodes as the receptor for the solar irradiance

NASA indicates a modified UV-MFRSR they use for continuous research in conjunction with their CIMEL and Brewer instruments at various sites around the world.

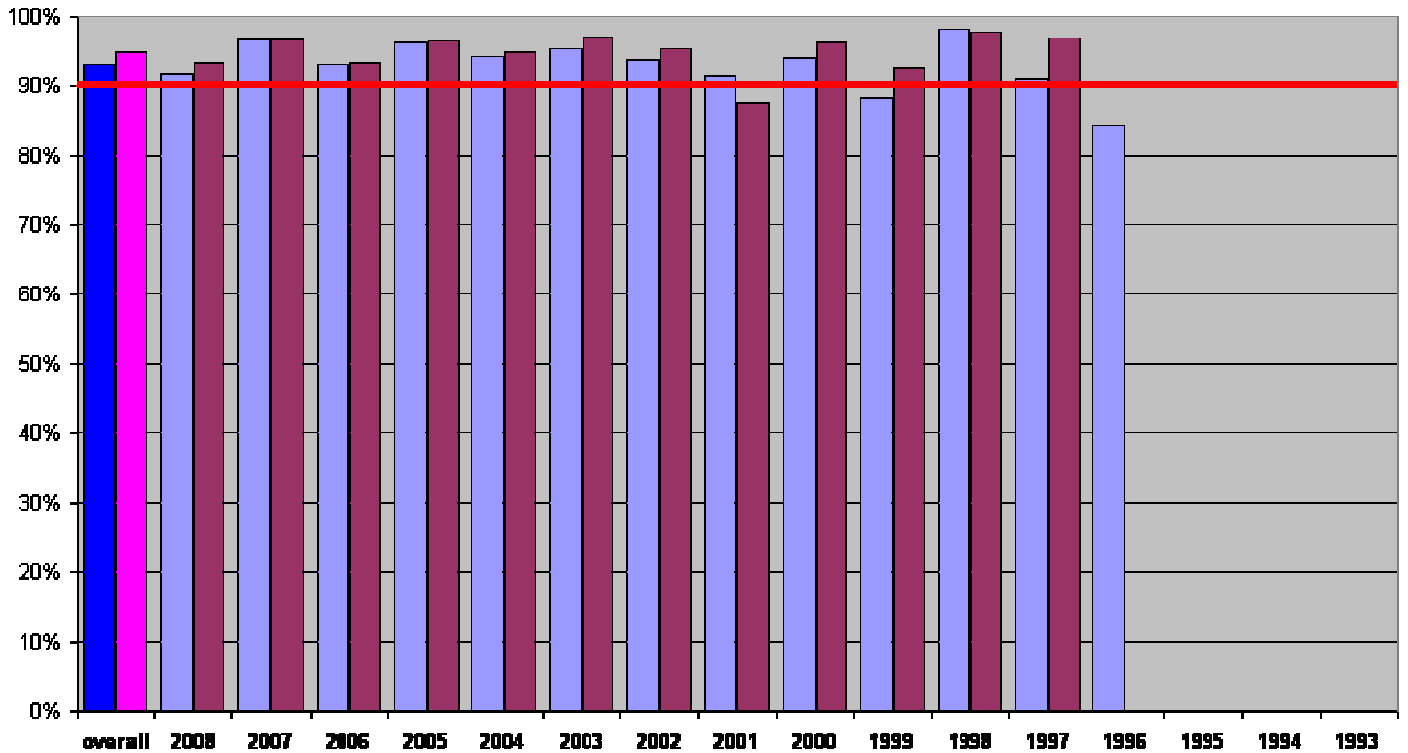
USDA UV-B Monitoring and Research Program Data Retrieval Success

AK01 98.1% AK02 95.2% ALASKA - UAF Poker Flat Research Range



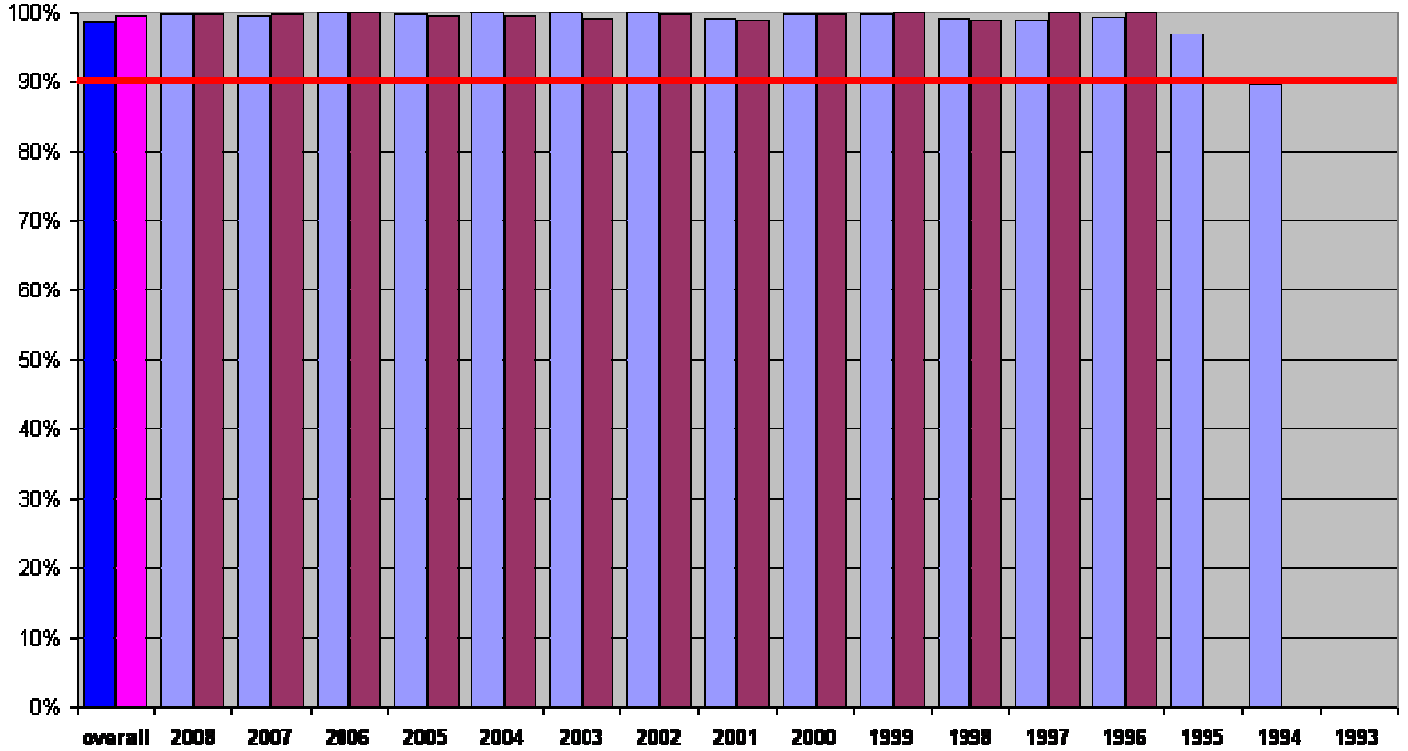
USDA UV-B Monitoring and Research Program Data Retrieval Success

AZ01 92.9% AZ02 94.7% ARIZONA - Grand Canyon National Park



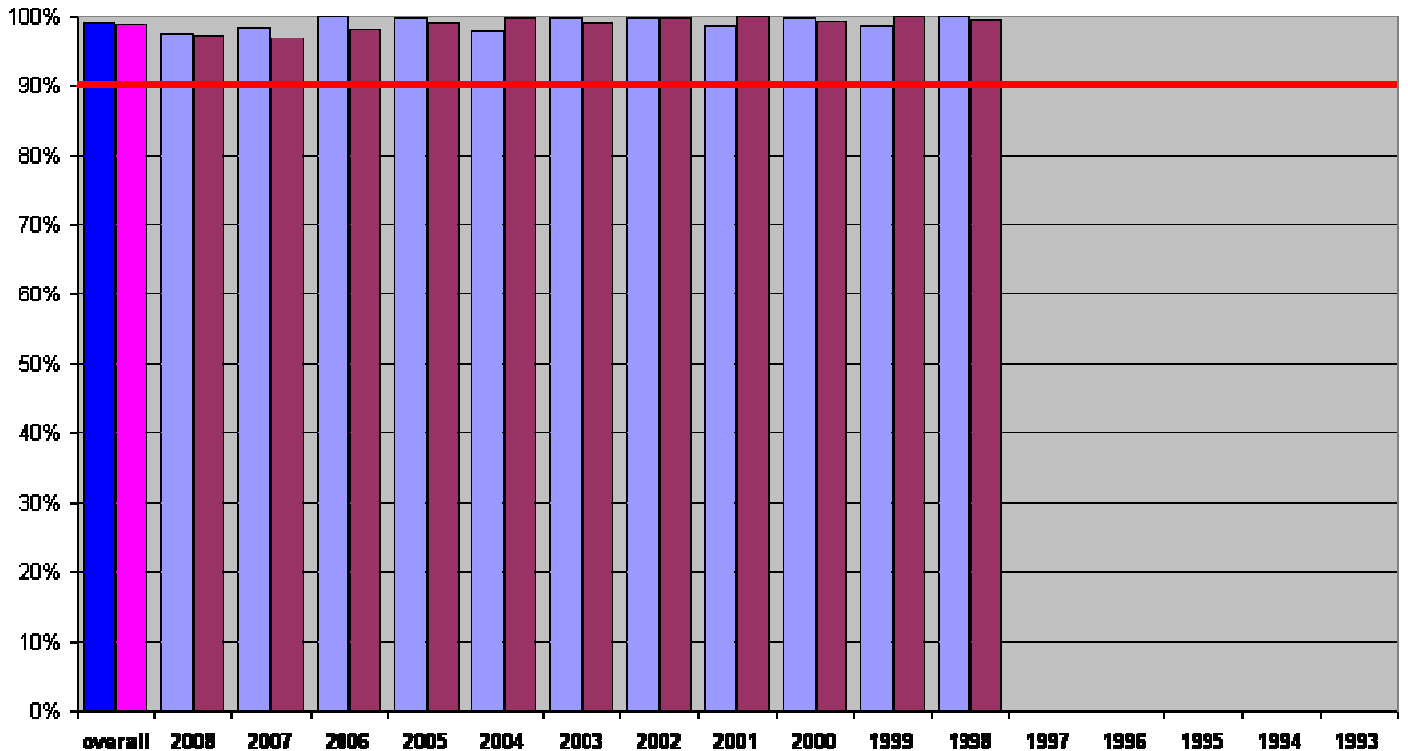
USDA UV-B Monitoring and Research Program Data Retrieval Success

CA01 98.7% CA02 99.5% CALIFORNIA - UC Davis Climate Station

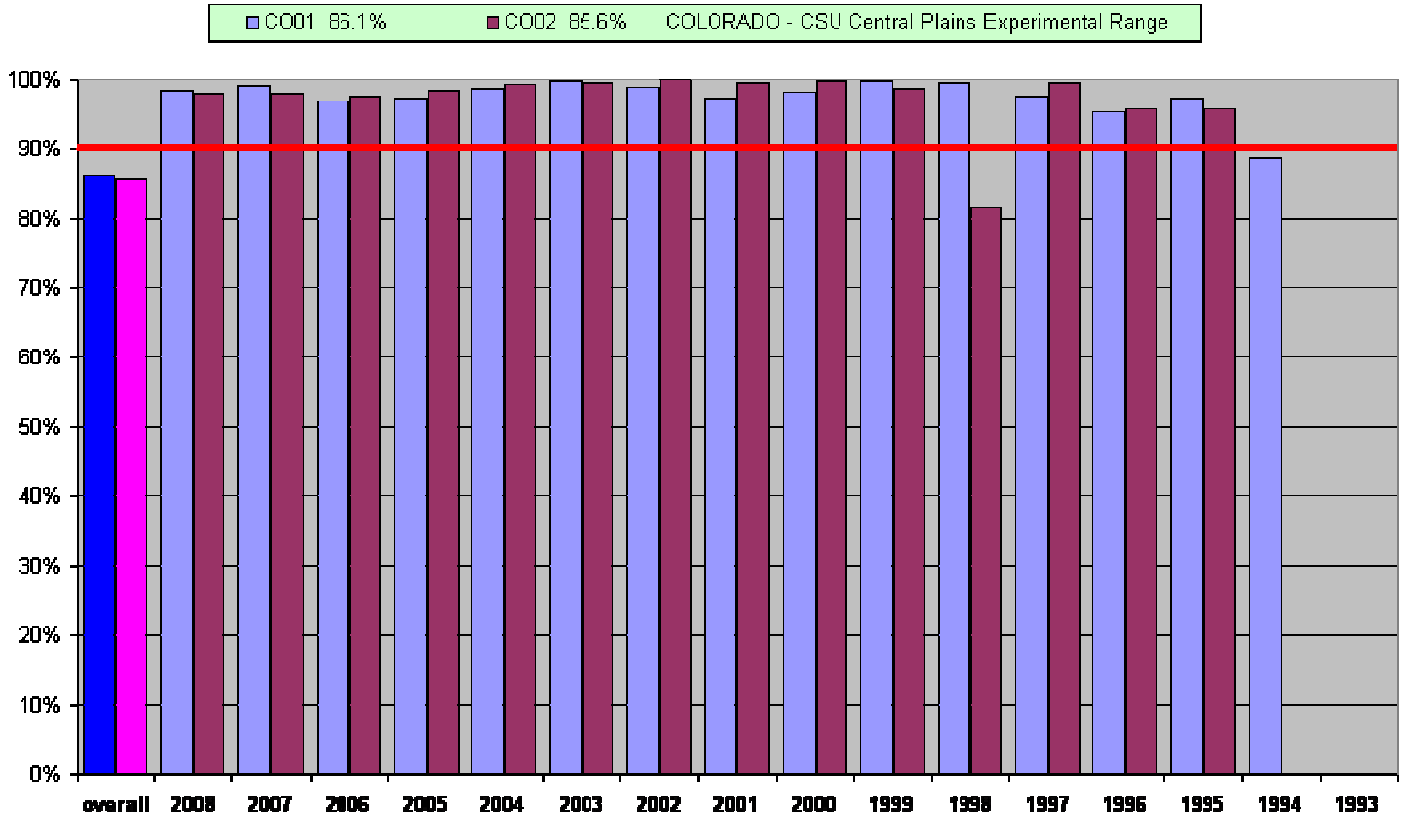


USDA UV-B Monitoring and Research Program Data Retrieval Success

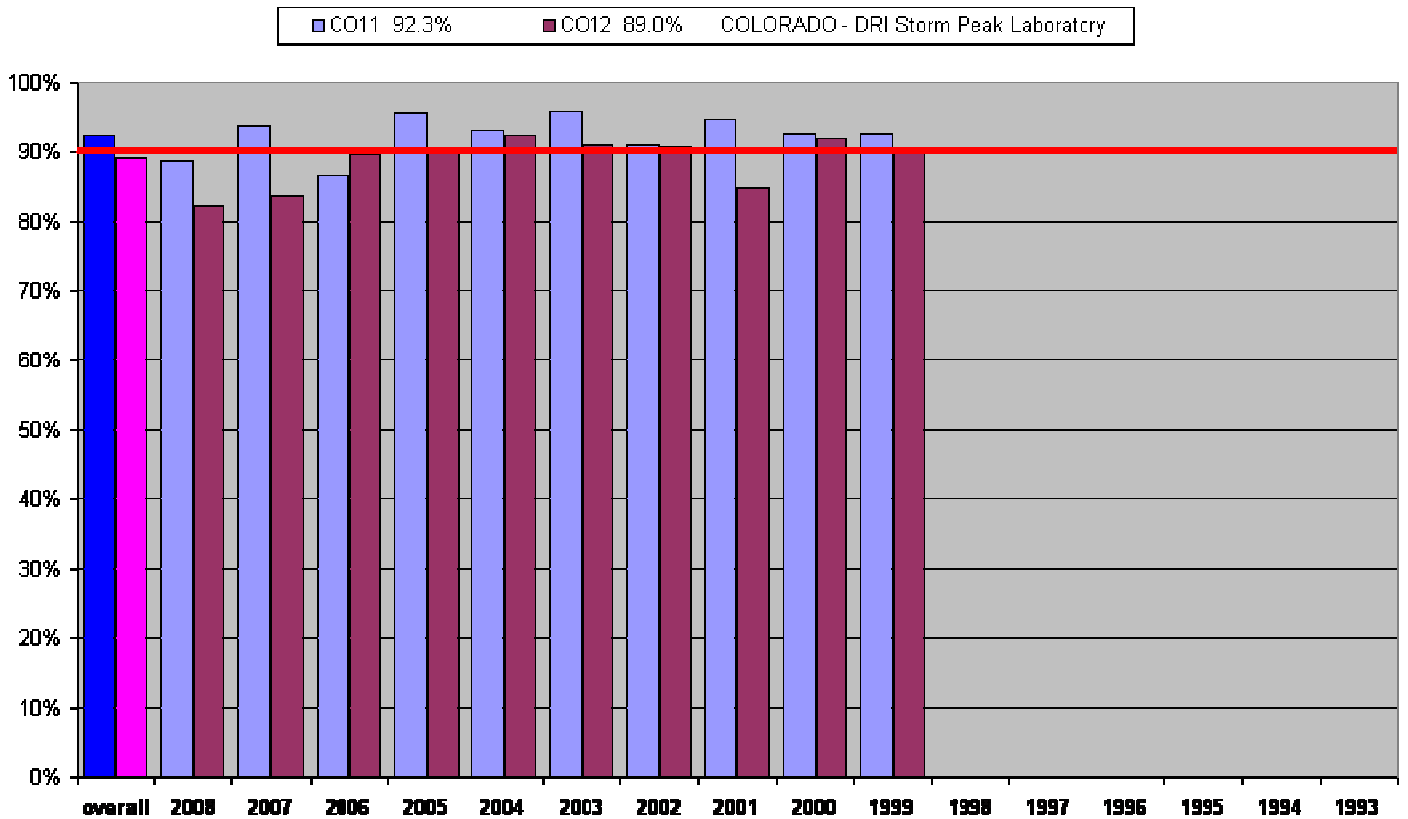
CA21 99.0% CA22 98.9% CALIFORNIA - UC Desert Research and Extension Center



USDA UV-B Monitoring and Research Program Data Retrieval Success

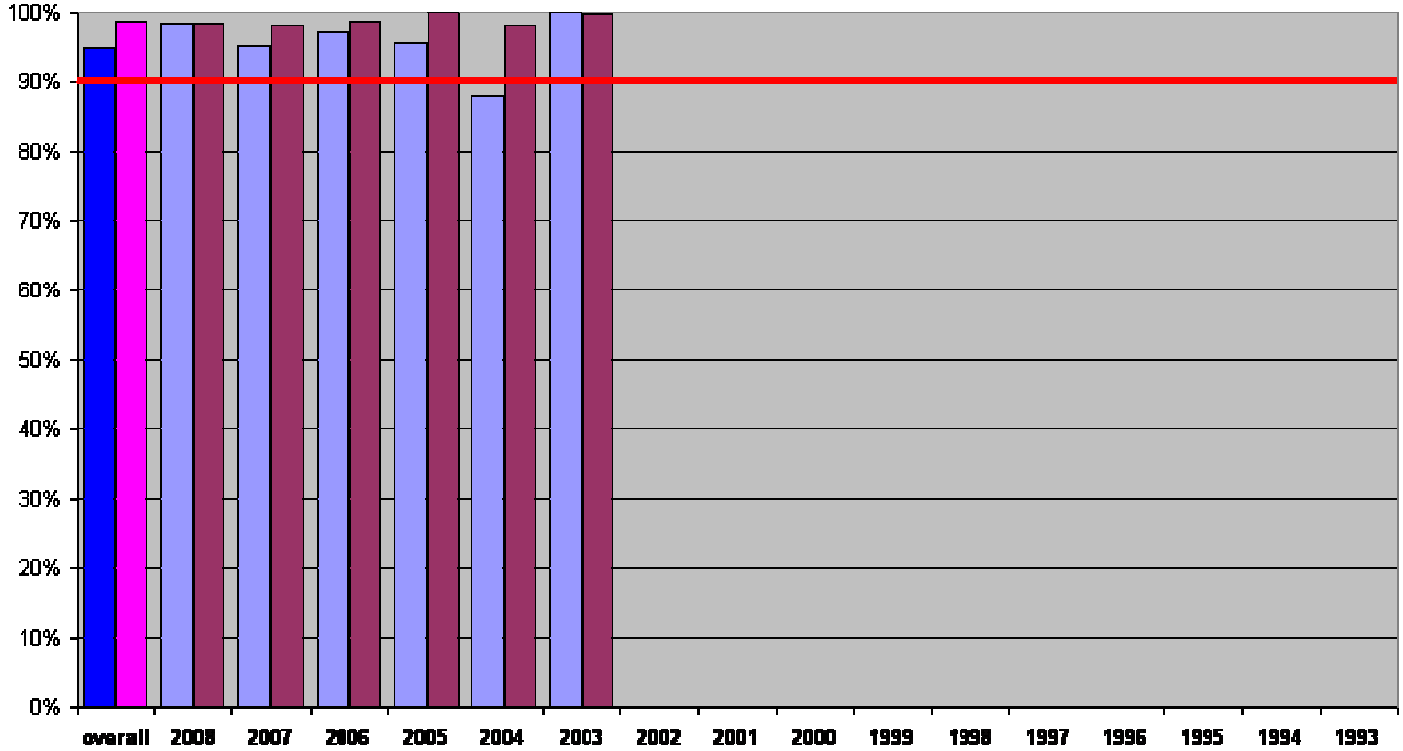


USDA UV-B Monitoring and Research Program Data Retrieval Success



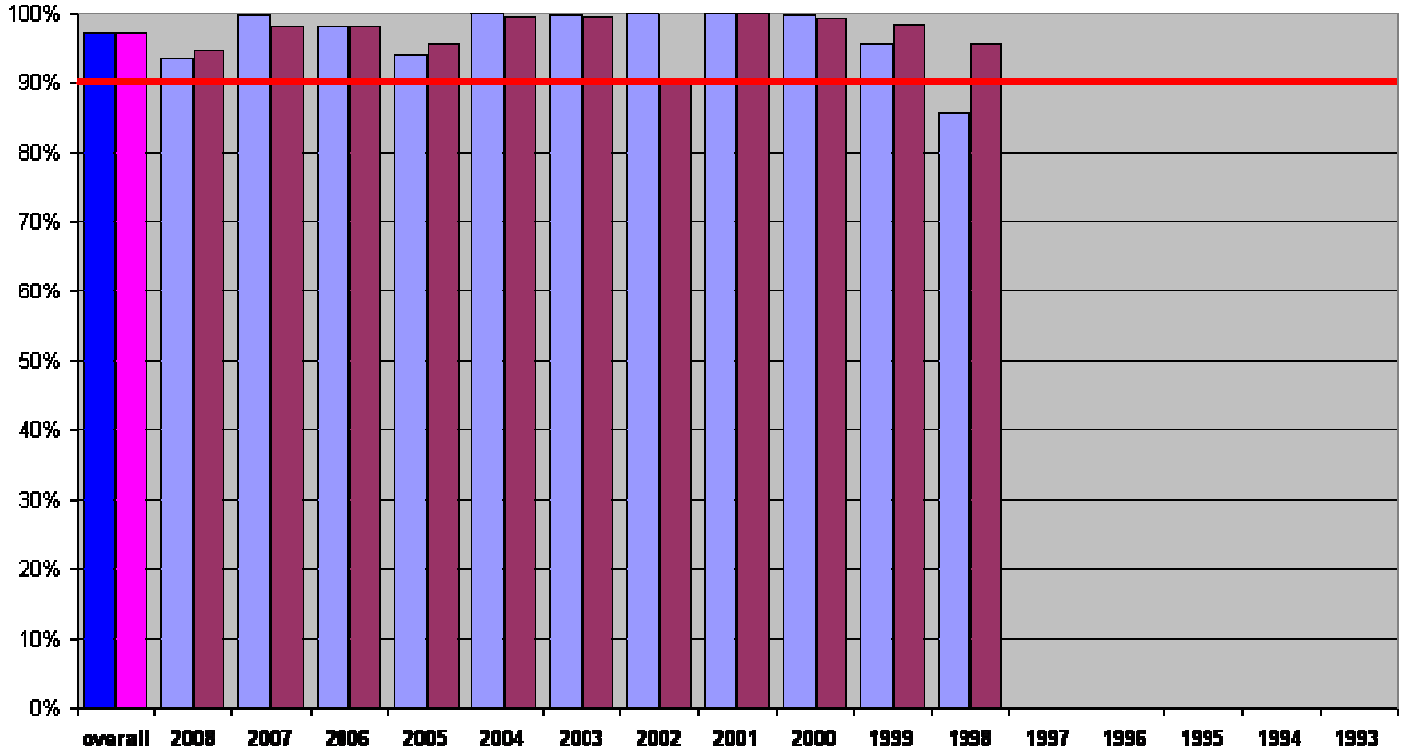
USDA UV-B Monitoring and Research Program Data Retrieval Success

■ CO41 94.8%
 ■ CO42 98.6%
 COLORADO - CSU Lamar Community College



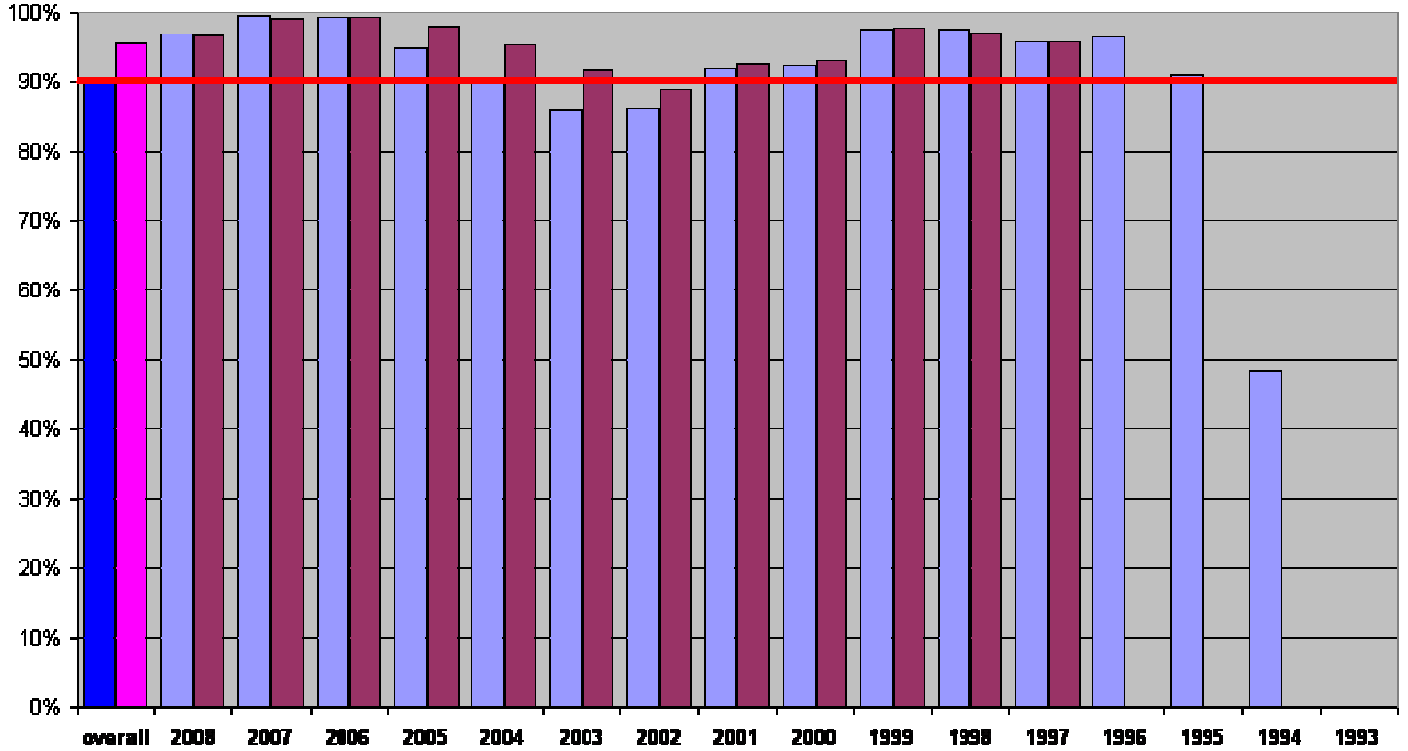
USDA UV-B Monitoring and Research Program Data Retrieval Success

■ FL01 97.2%
 ■ FL02 97.1%
 FLORIDA - Everglades National Park



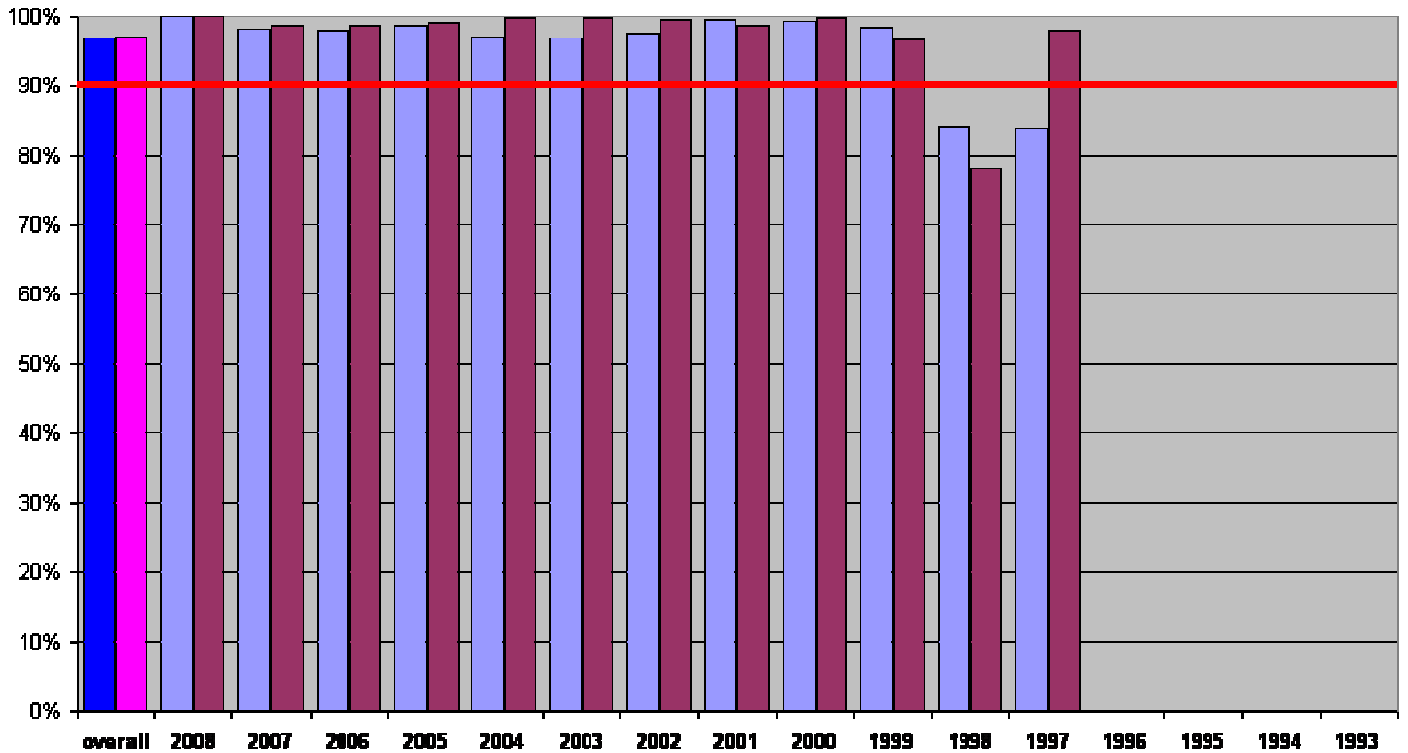
USDA UV-B Monitoring and Research Program Data Retrieval Success

GA01 90.2% GA02 95.3% GEORGIA - UGA Bledsoe Research Farm

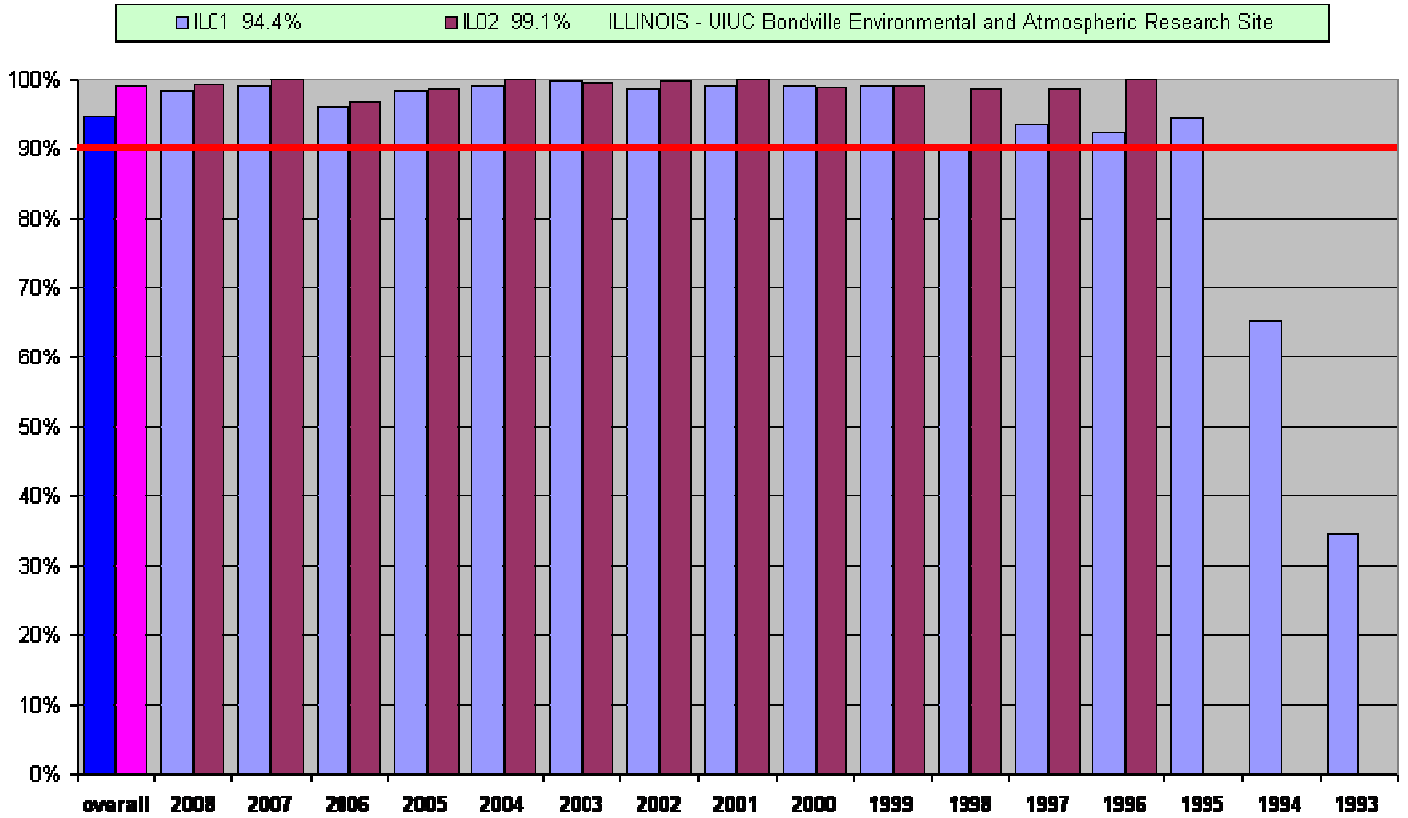


USDA UV-B Monitoring and Research Program Data Retrieval Success

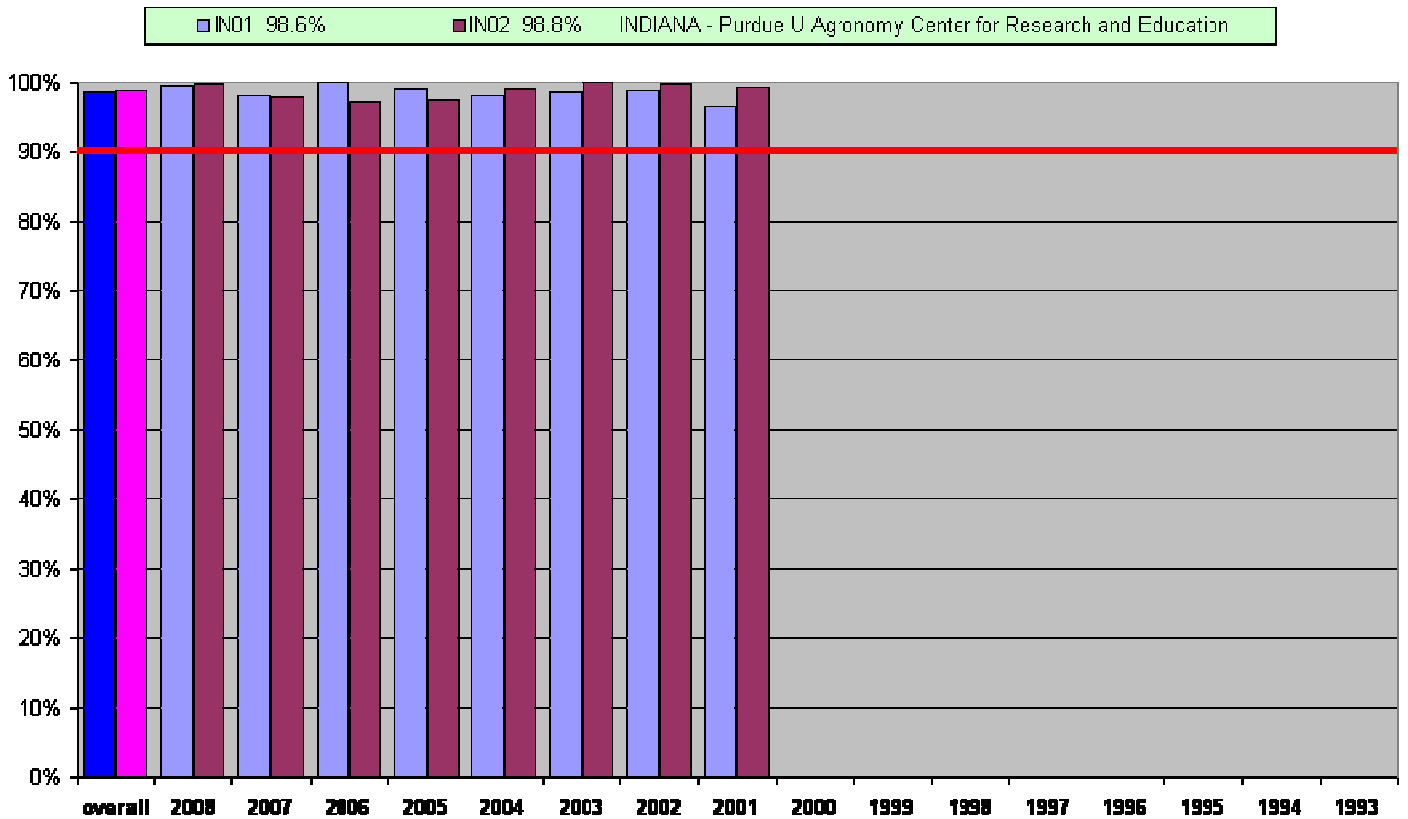
HI01 96.8% HI02 97.1% HAWAII - NCAA Mauna Loa Observatory



USDA UV-B Monitoring and Research Program Data Retrieval Success

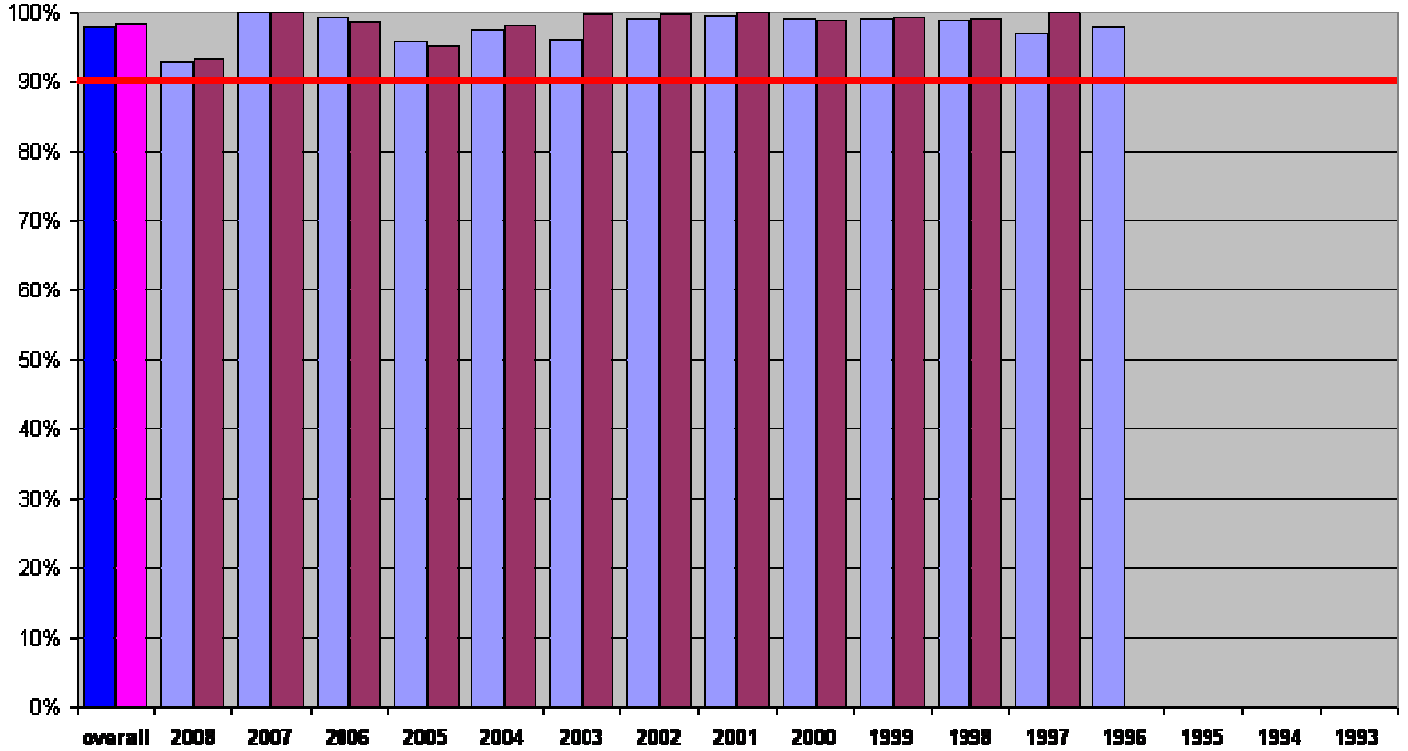


USDA UV-B Monitoring and Research Program Data Retrieval Success



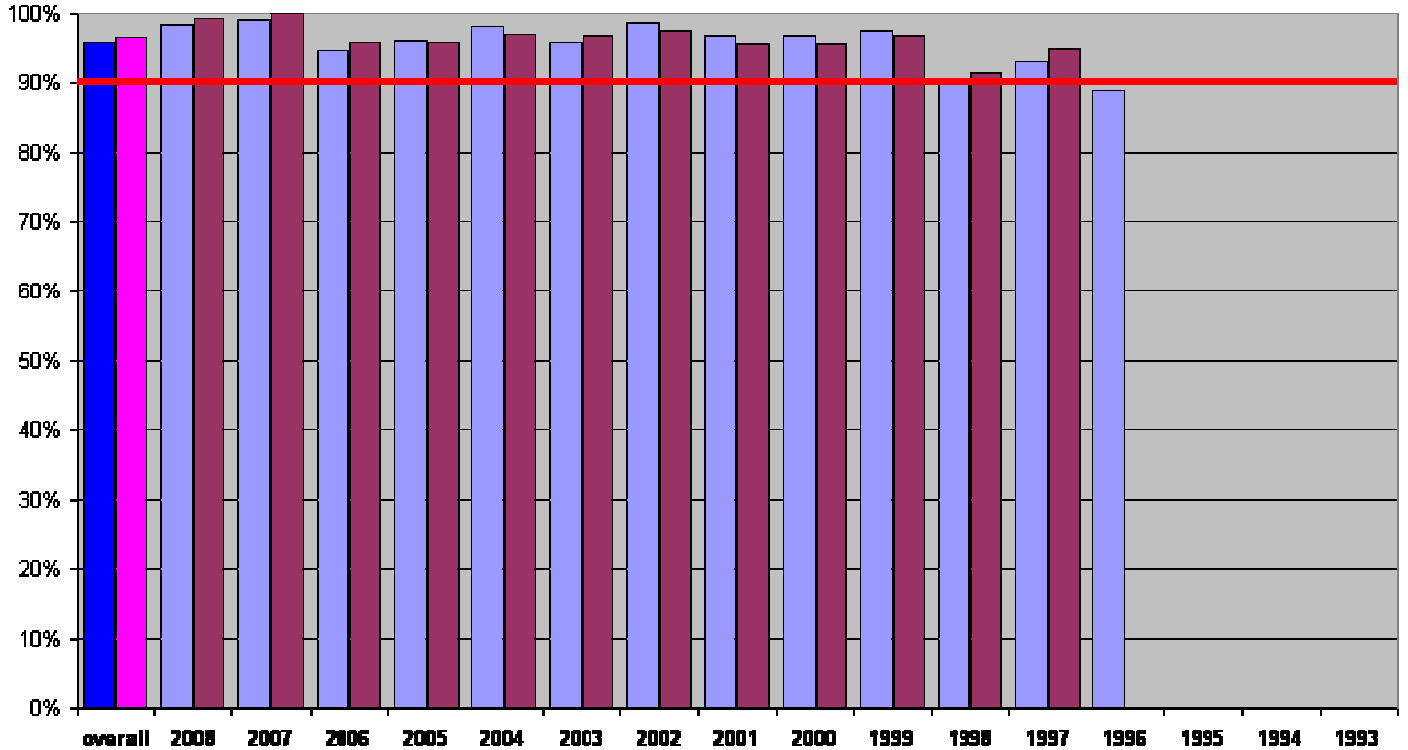
USDA UV-B Monitoring and Research Program Data Retrieval Success

■ LA01 97.8%
 ■ LA02 98.3%
 LOUISIANA - LSU Central Research Station

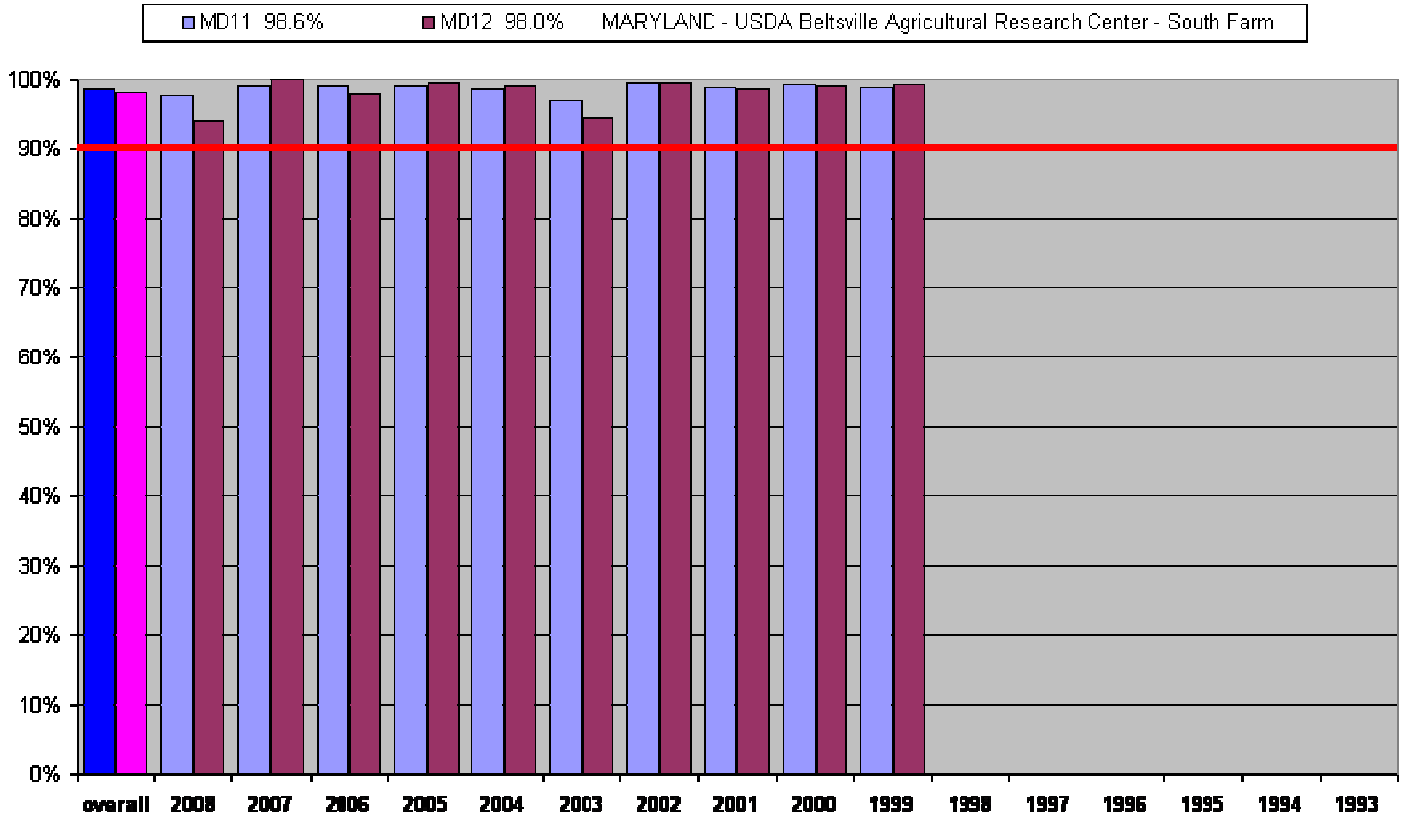


USDA UV-B Monitoring and Research Program Data Retrieval Success

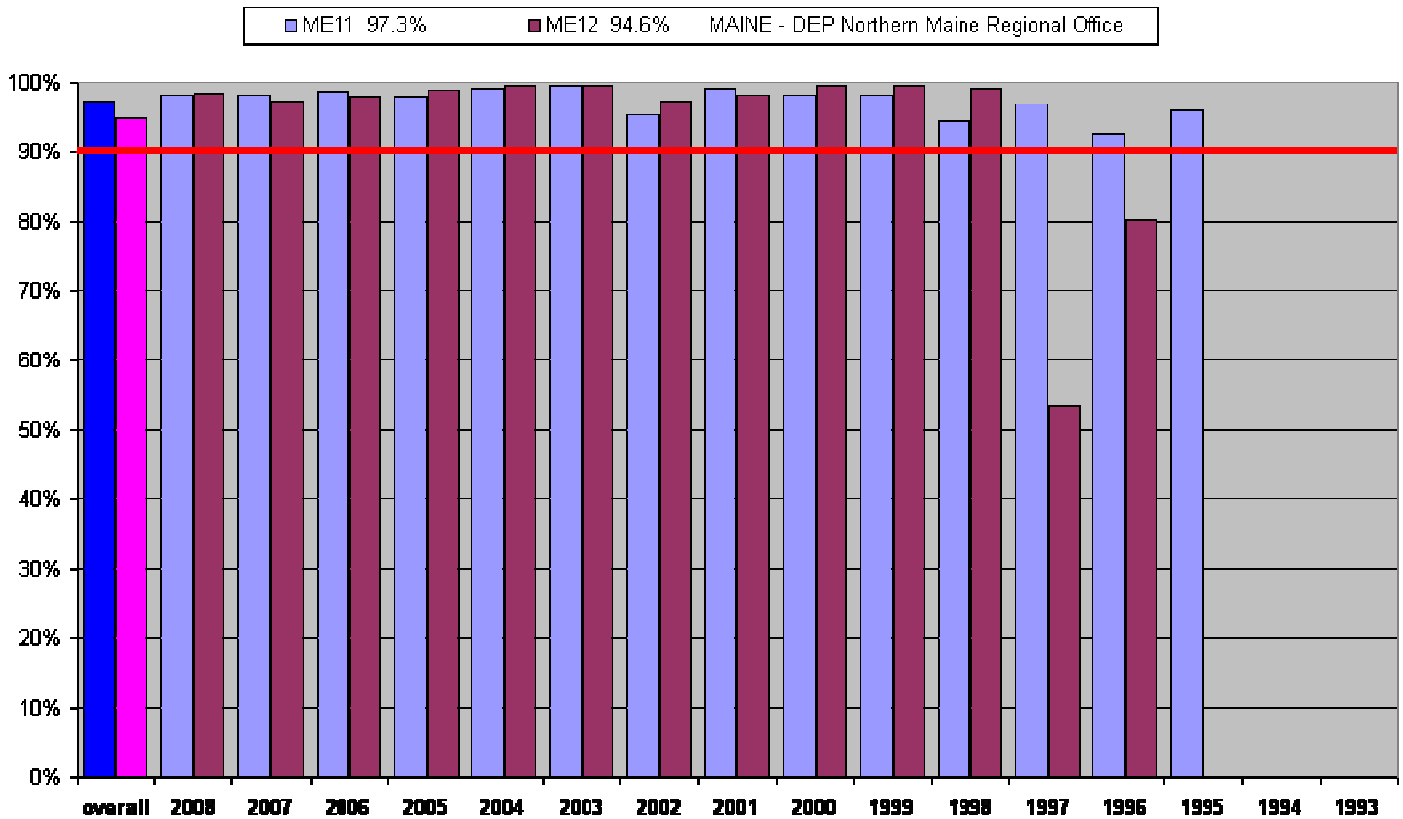
■ MD01 95.6%
 ■ MD02 96.3%
 MARYLAND - UMD Wye Research and Education Center



USDA UV-B Monitoring and Research Program Data Retrieval Success

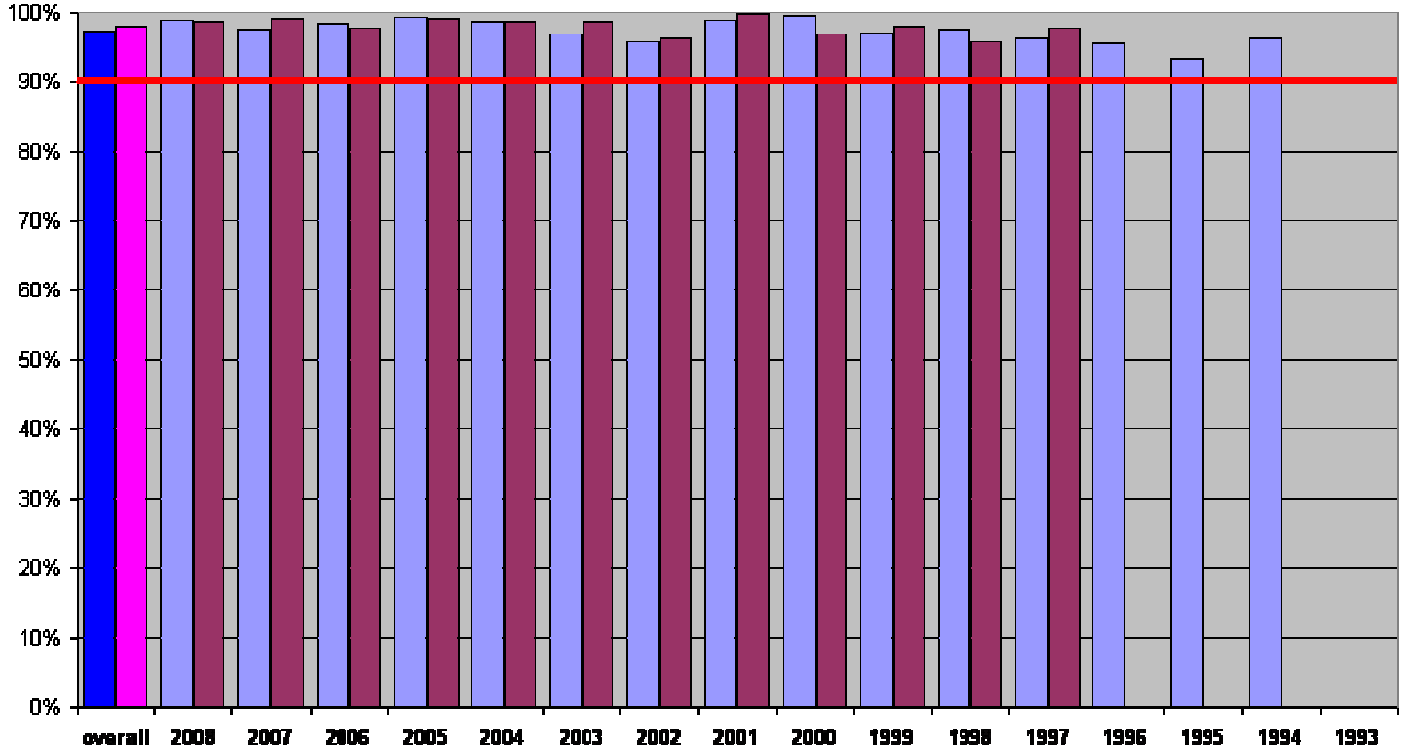


USDA UV-B Monitoring and Research Program Data Retrieval Success



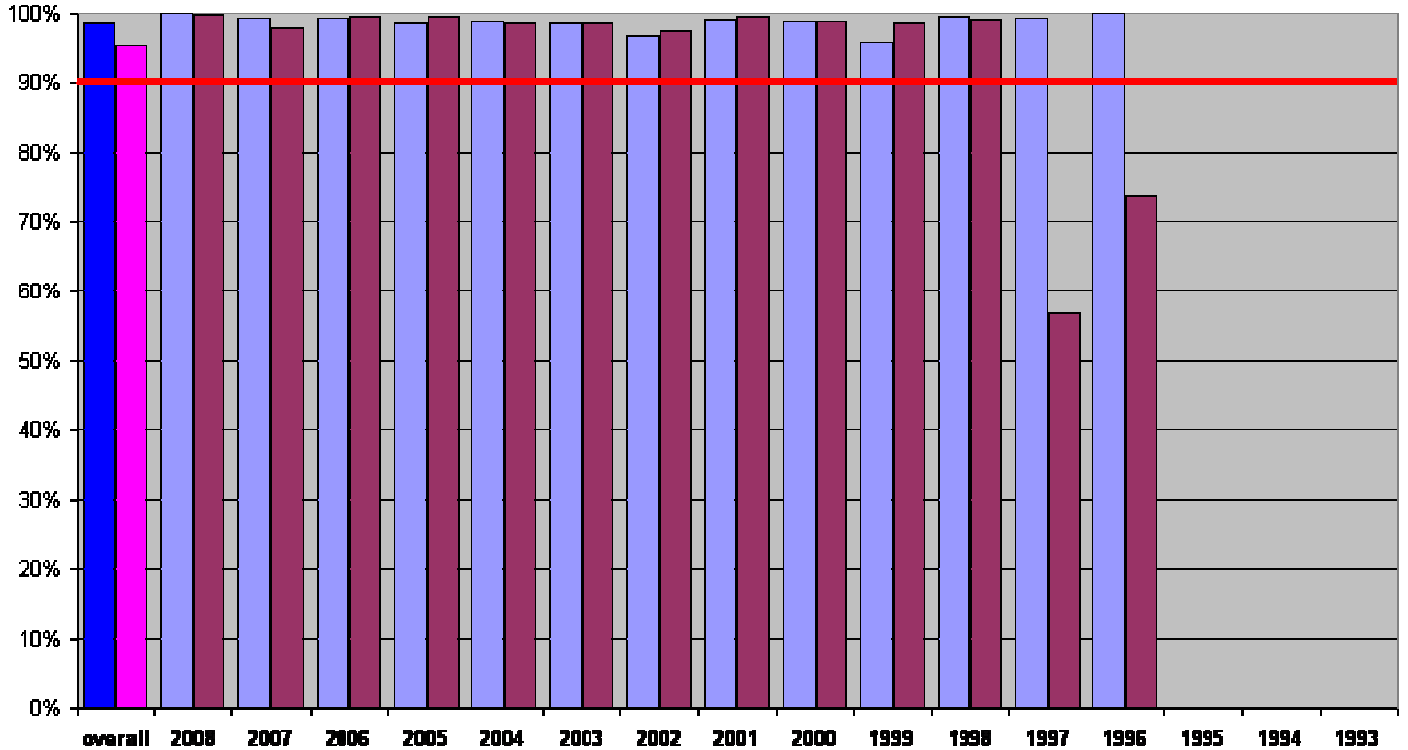
USDA UV-B Monitoring and Research Program Data Retrieval Success

■ MID1 97.2%
 ■ MID2 96.0%
 MICHIGAN - UM Biological Station at Douglas Lake

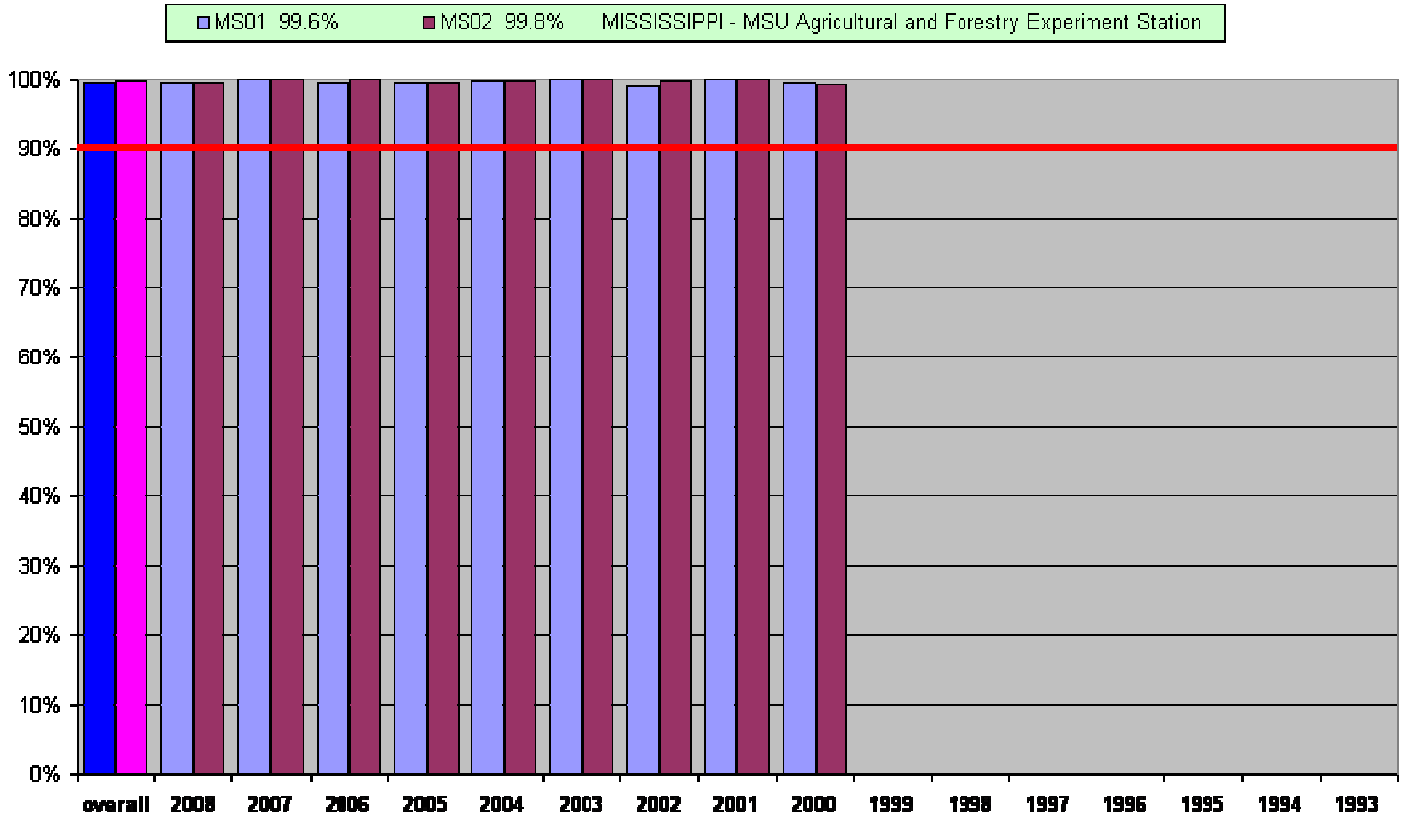


USDA UV-B Monitoring and Research Program Data Retrieval Success

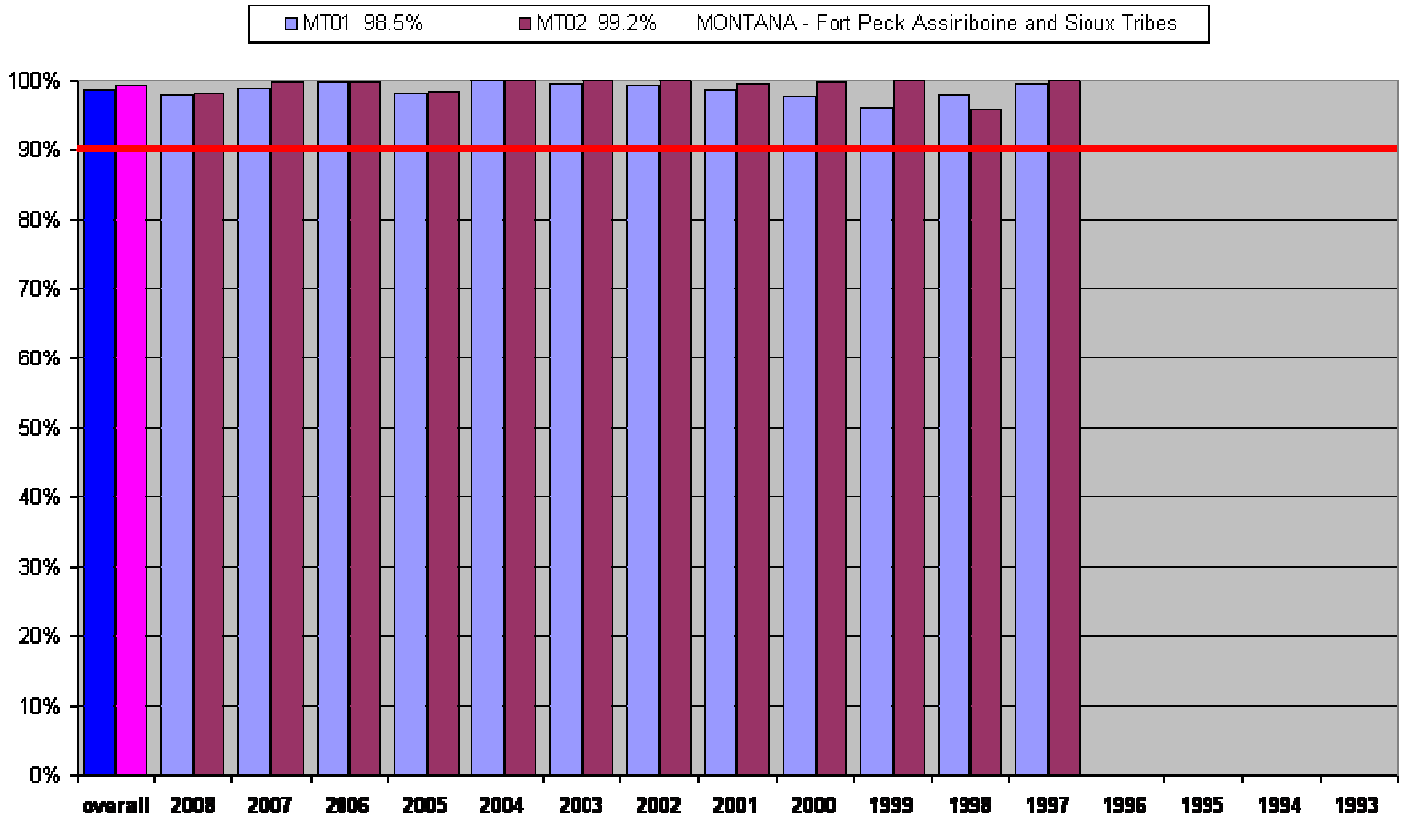
■ MND1 98.6%
 ■ MND2 95.1%
 MINNESOTA - UMN North Central Research and Outreach Center



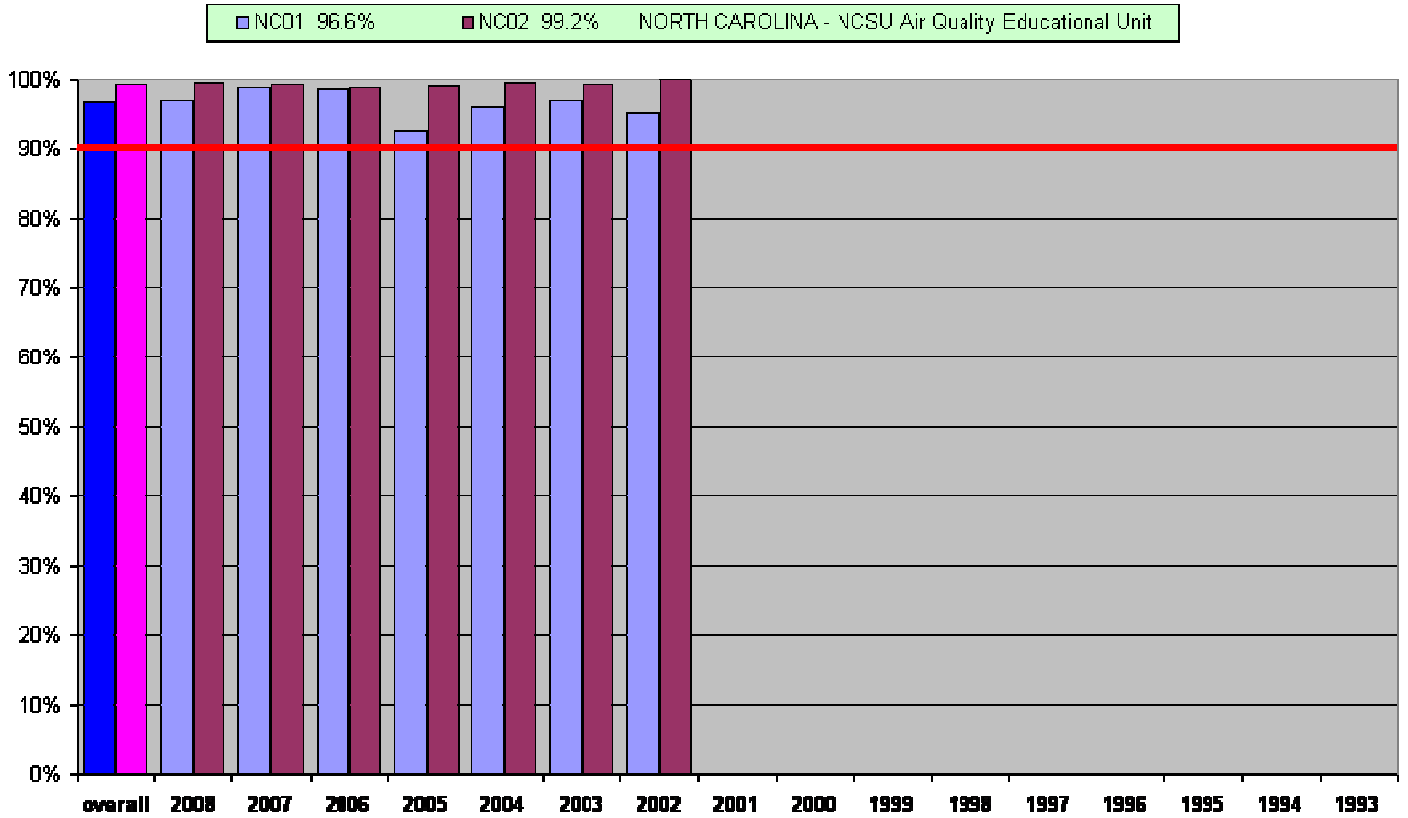
USDA UV-B Monitoring and Research Program Data Retrieval Success



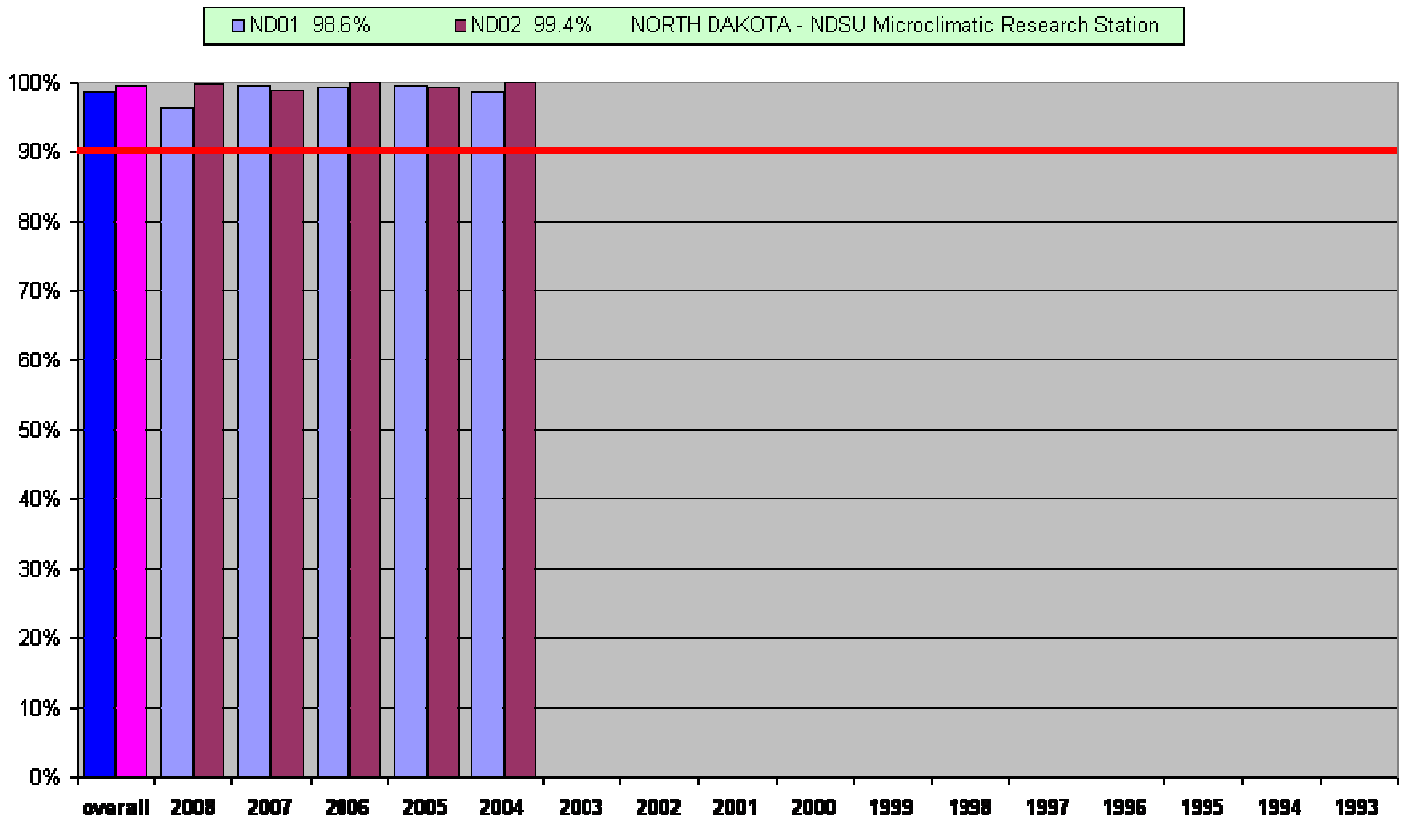
USDA UV-B Monitoring and Research Program Data Retrieval Success



USDA UV-B Monitoring and Research Program Data Retrieval Success

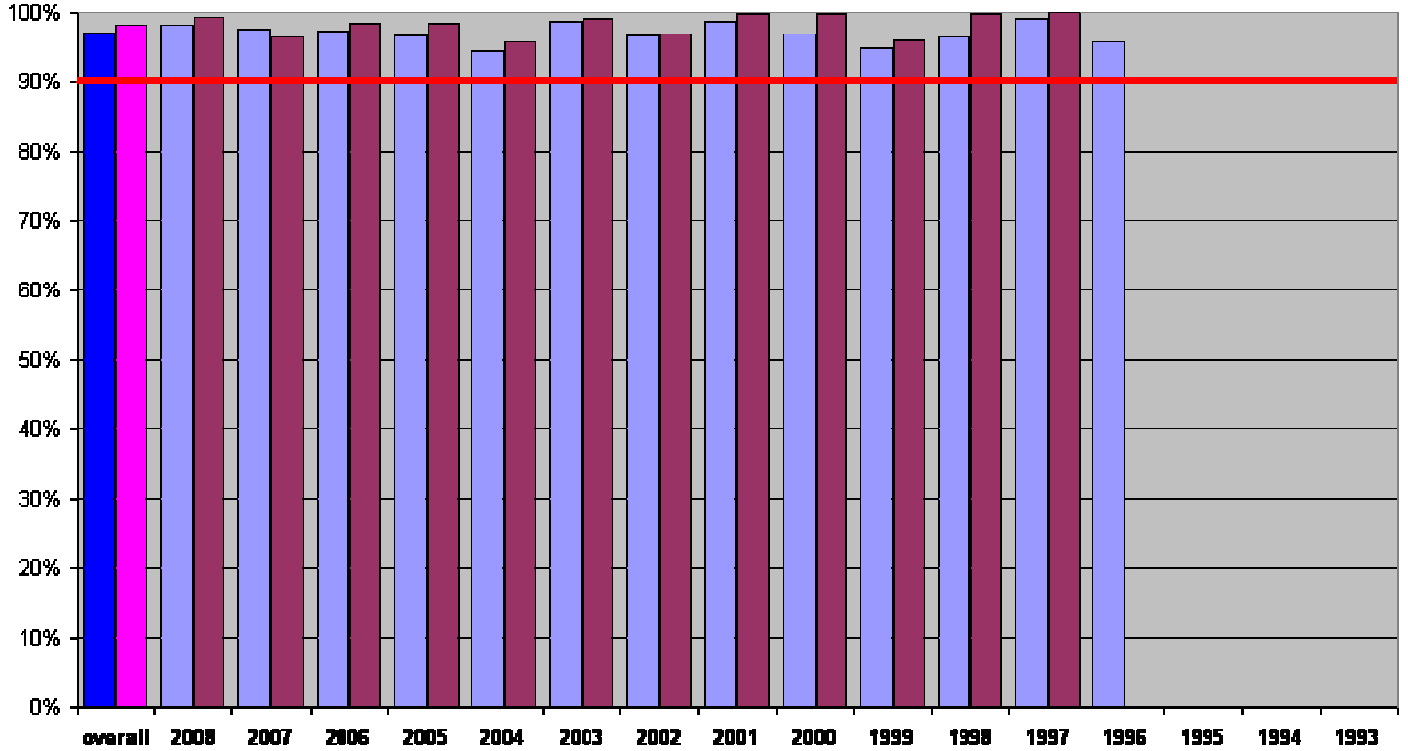


USDA UV-B Monitoring and Research Program Data Retrieval Success



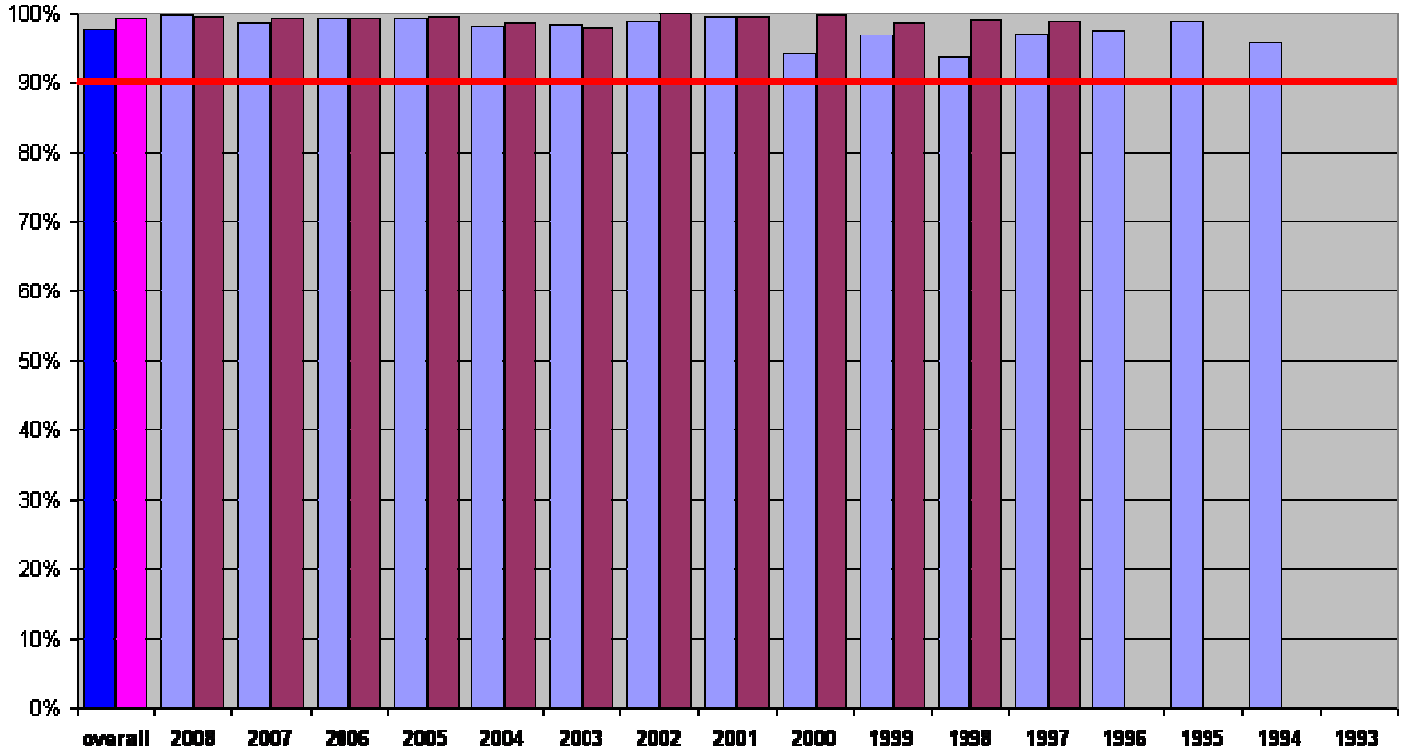
USDA UV-B Monitoring and Research Program Data Retrieval Success

■ NED1 97.0%
 ■ NED2 98.1%
 NEBRASKA - UNL High Plains Regional Climate Center



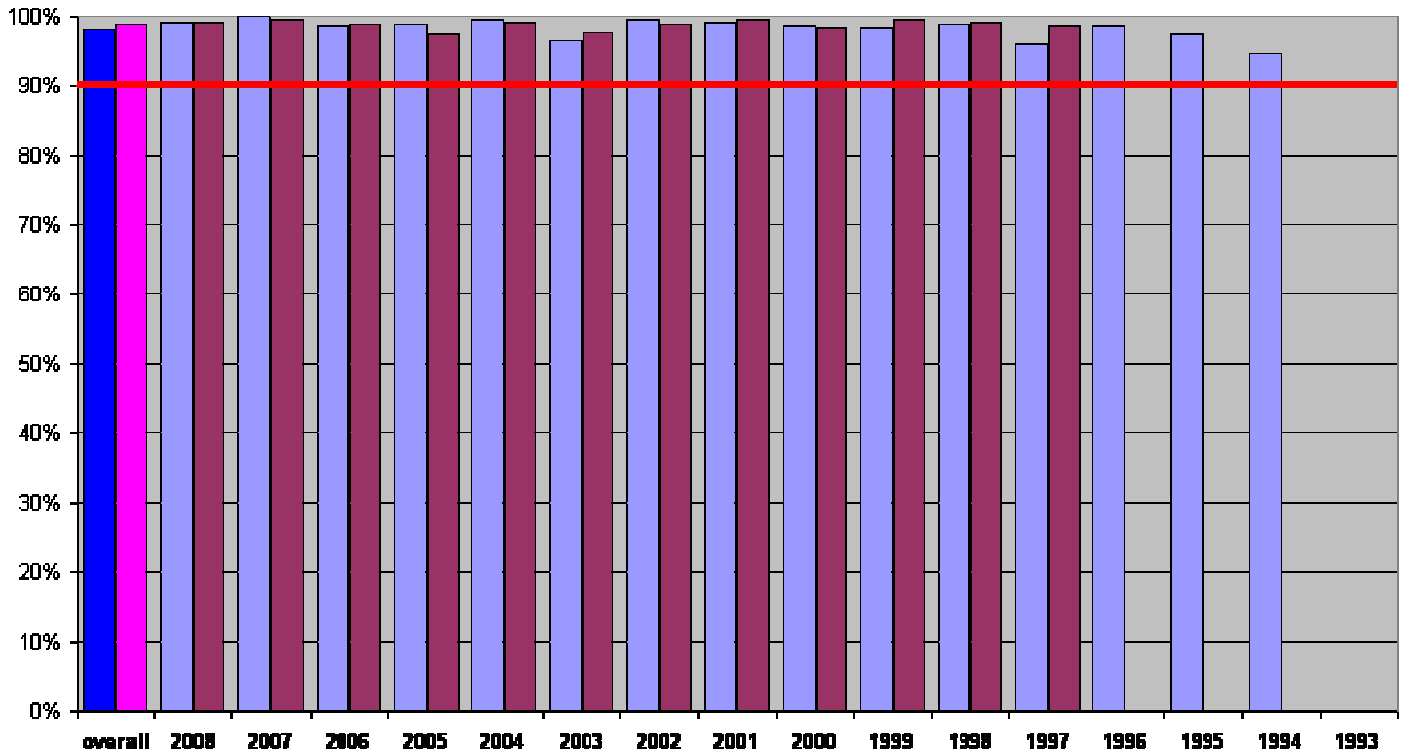
USDA UV-B Monitoring and Research Program Data Retrieval Success

■ NMD1 97.7%
 ■ NMD2 99.2%
 NEW MEXICO - NMSU Jornada Experimental Range

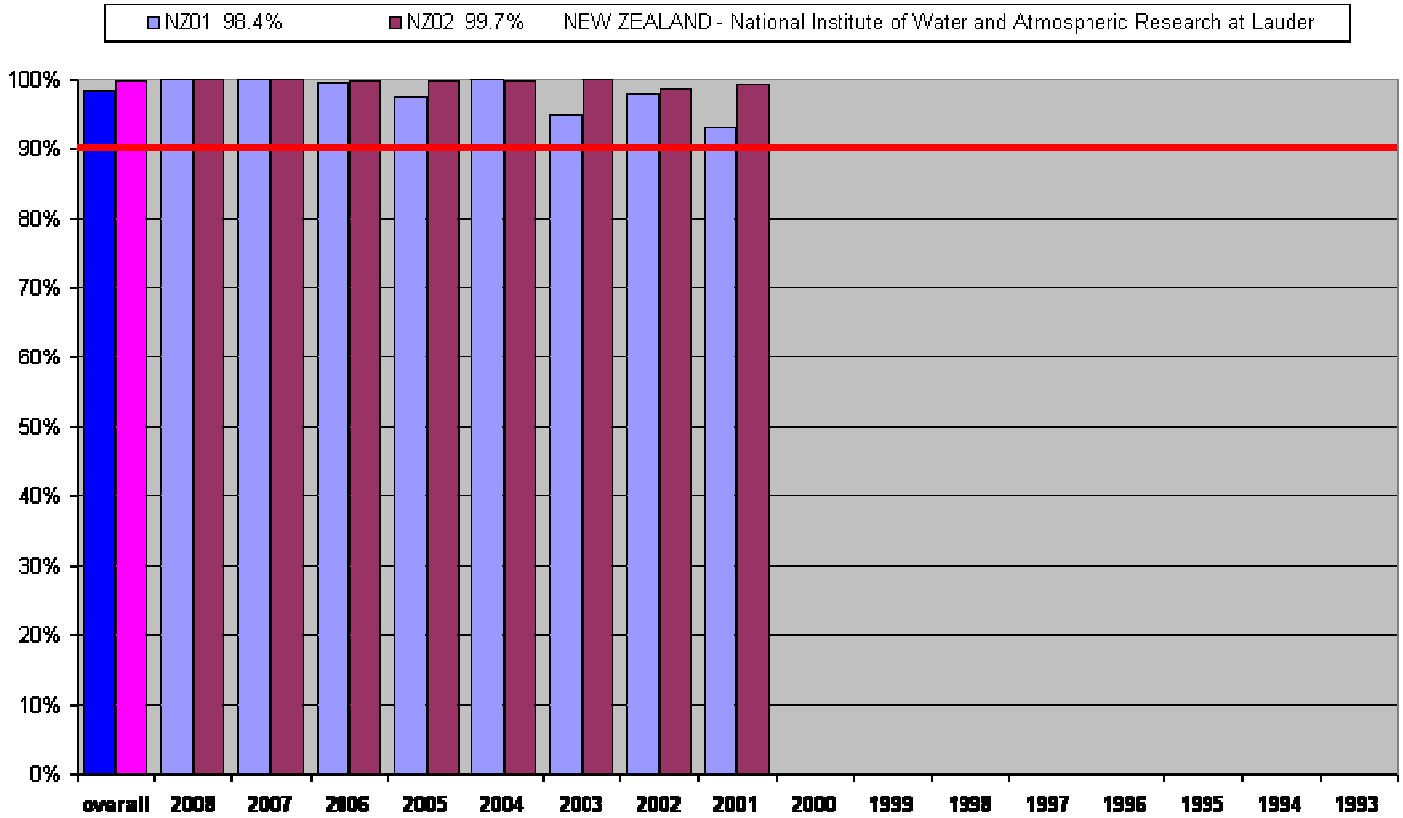


USDA UV-B Monitoring and Research Program Data Retrieval Success

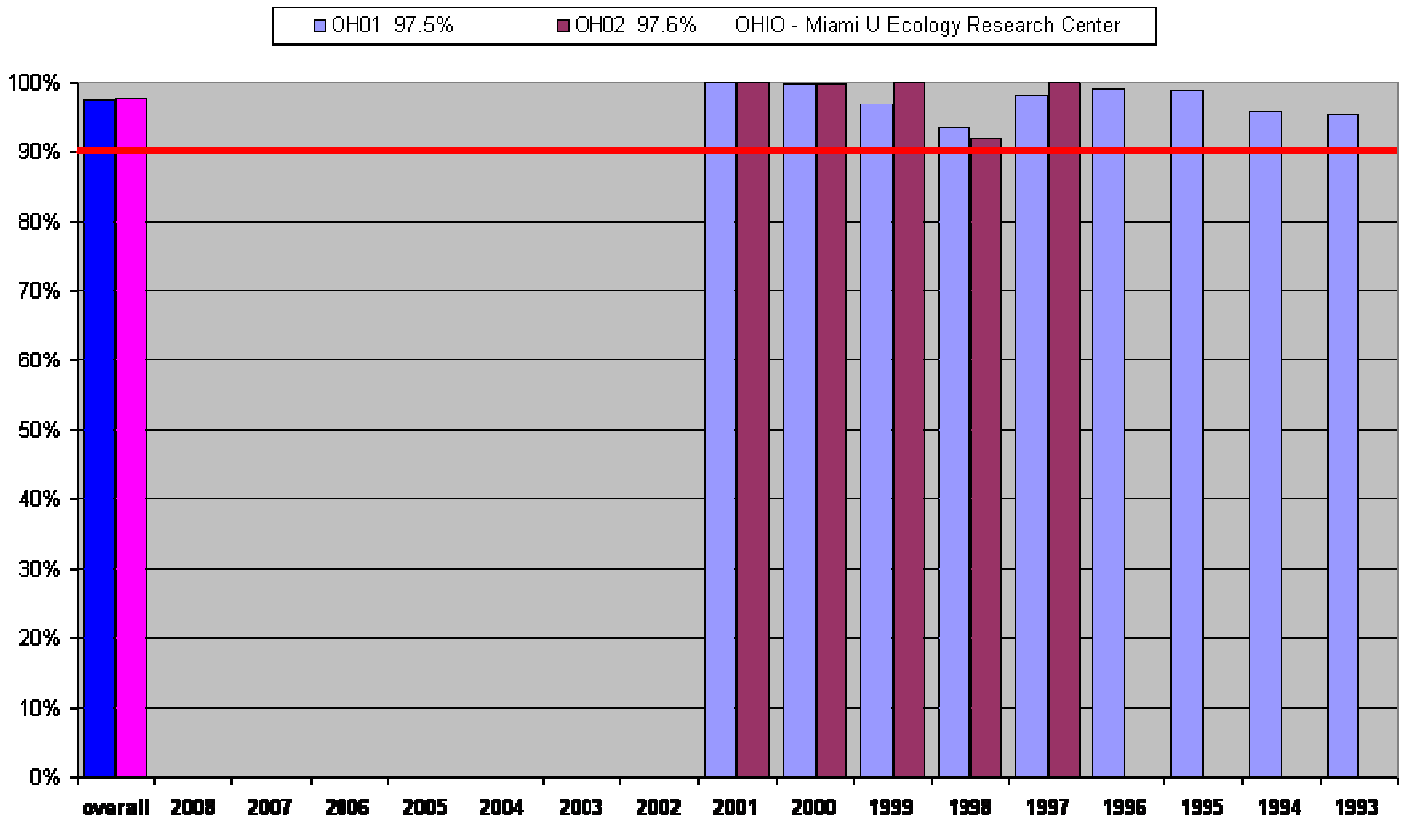
NY01 98.2% NY02 98.8% NEW YORK - Cornell U NYS Agricultural Experiment Station at Geneva



USDA UV-B Monitoring and Research Program Data Retrieval Success

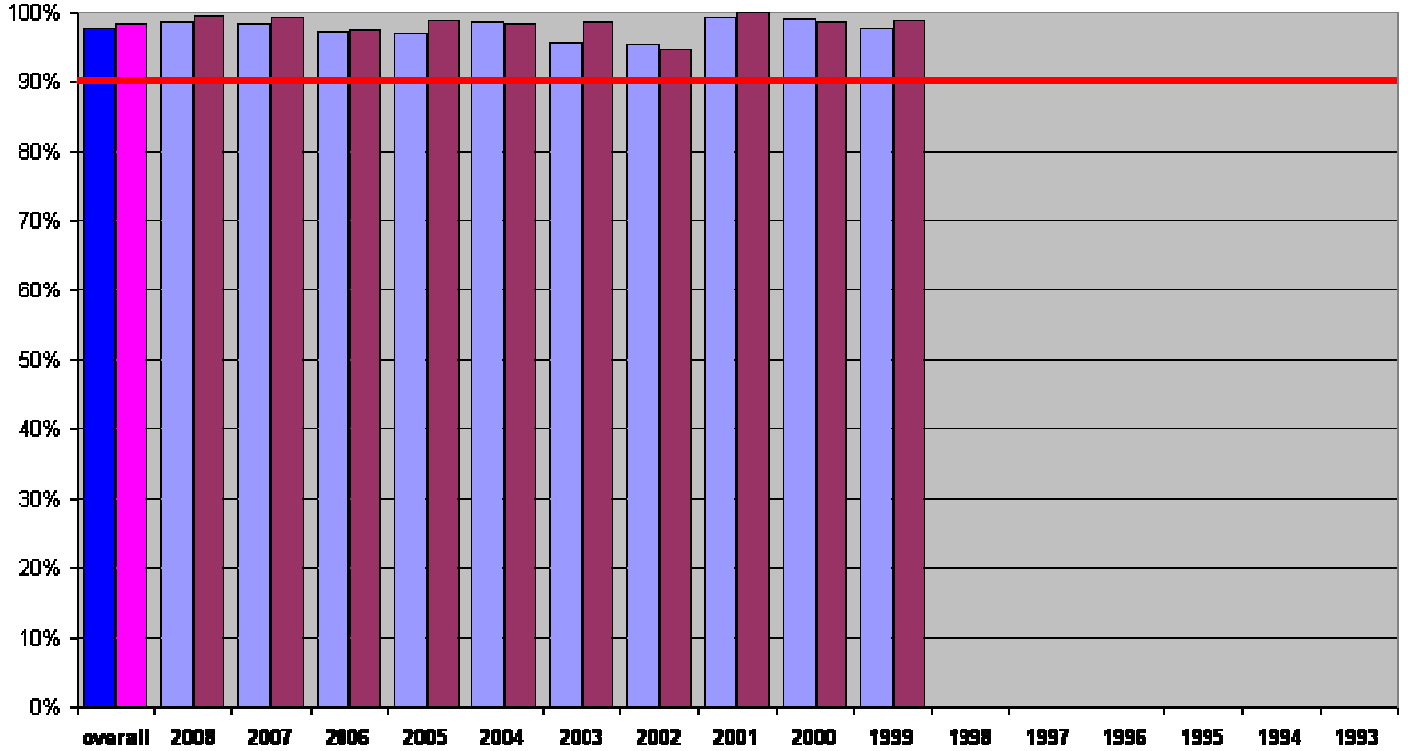


USDA UV-B Monitoring and Research Program Data Retrieval Success



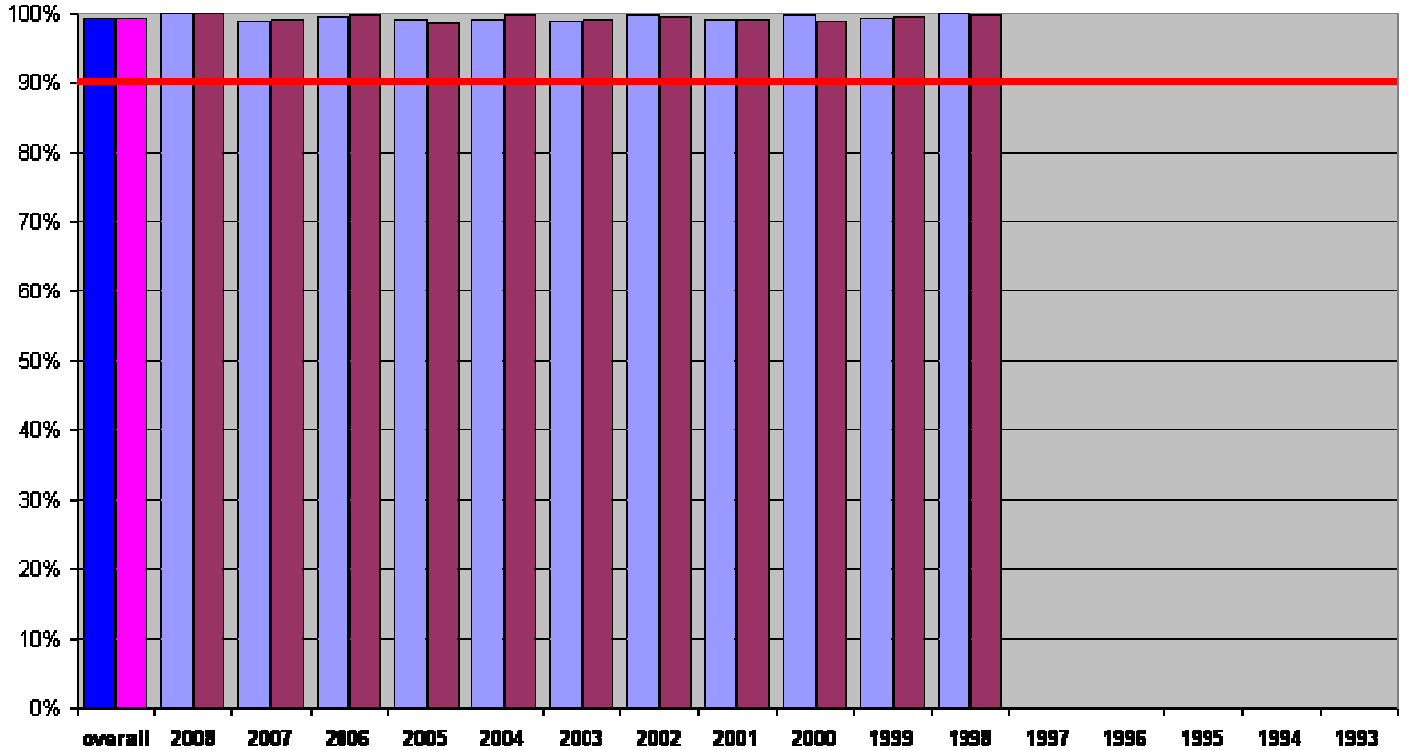
USDA UV-B Monitoring and Research Program Data Retrieval Success

■ OK01 97.6%
 ■ OK02 98.4%
 OKLAHOMA - US DoE ARM / SGP / CART site



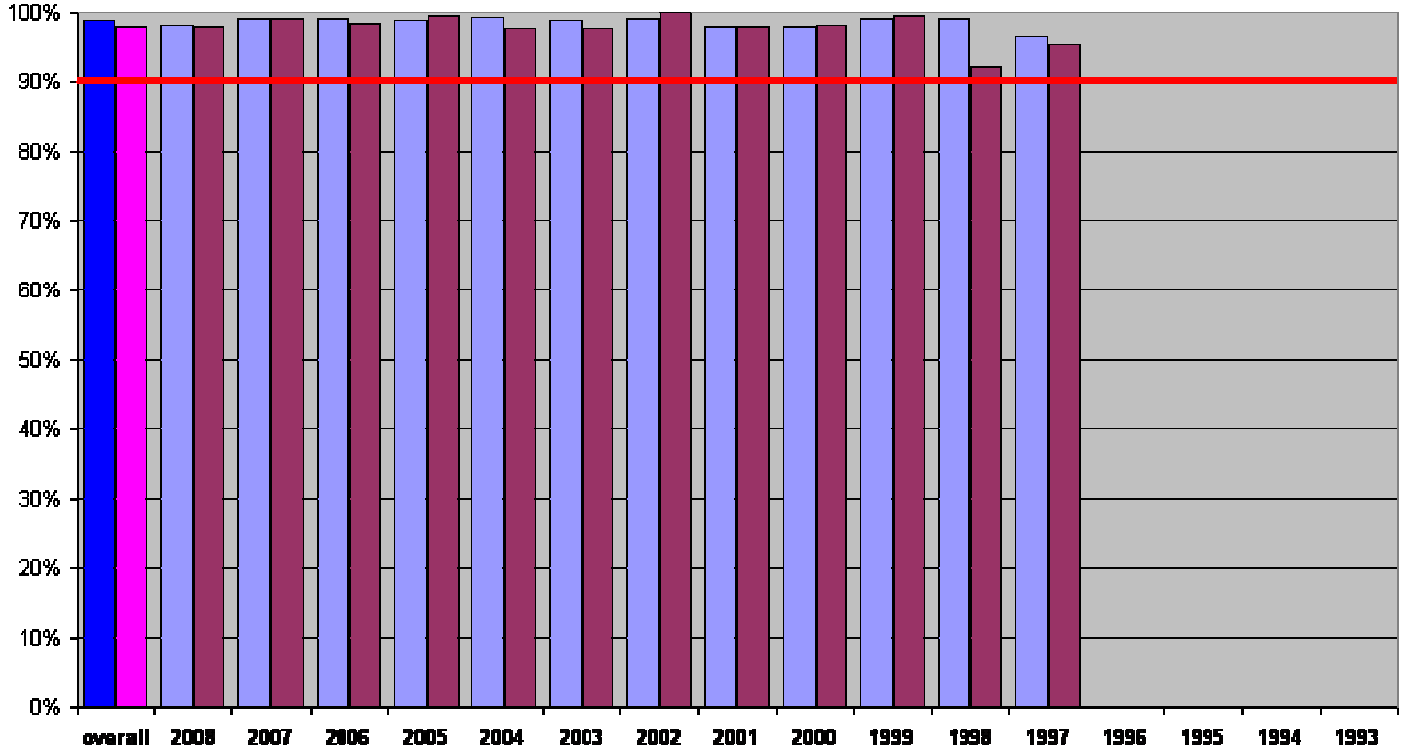
USDA UV-B Monitoring and Research Program Data Retrieval Success

■ ON01 99.3%
 ■ ON02 99.3%
 ONTARIO - Environment Canada building



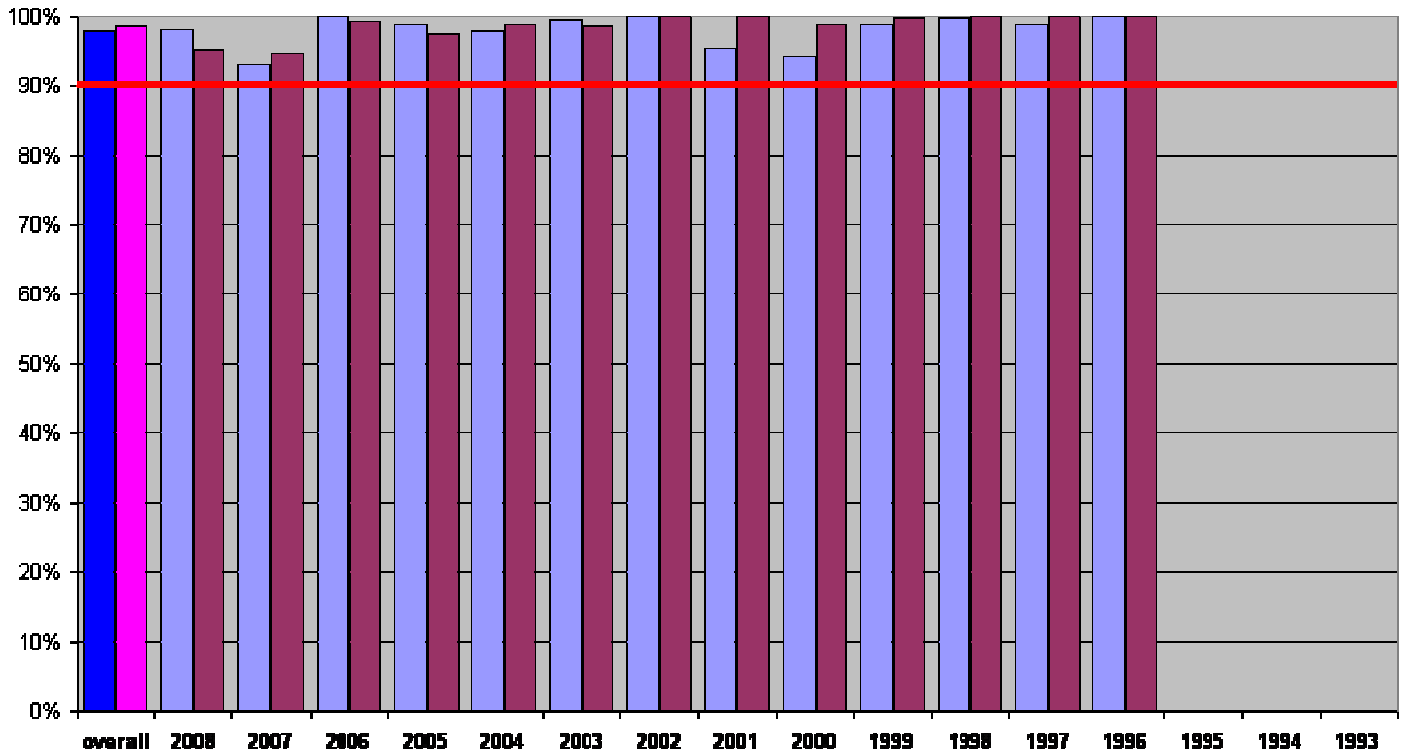
USDA UV-B Monitoring and Research Program Data Retrieval Success

■ SKC1 98.7%
 ■ SK02 97.9%
 SASKATCHEWAN - EC Bratt's Lake Observatory



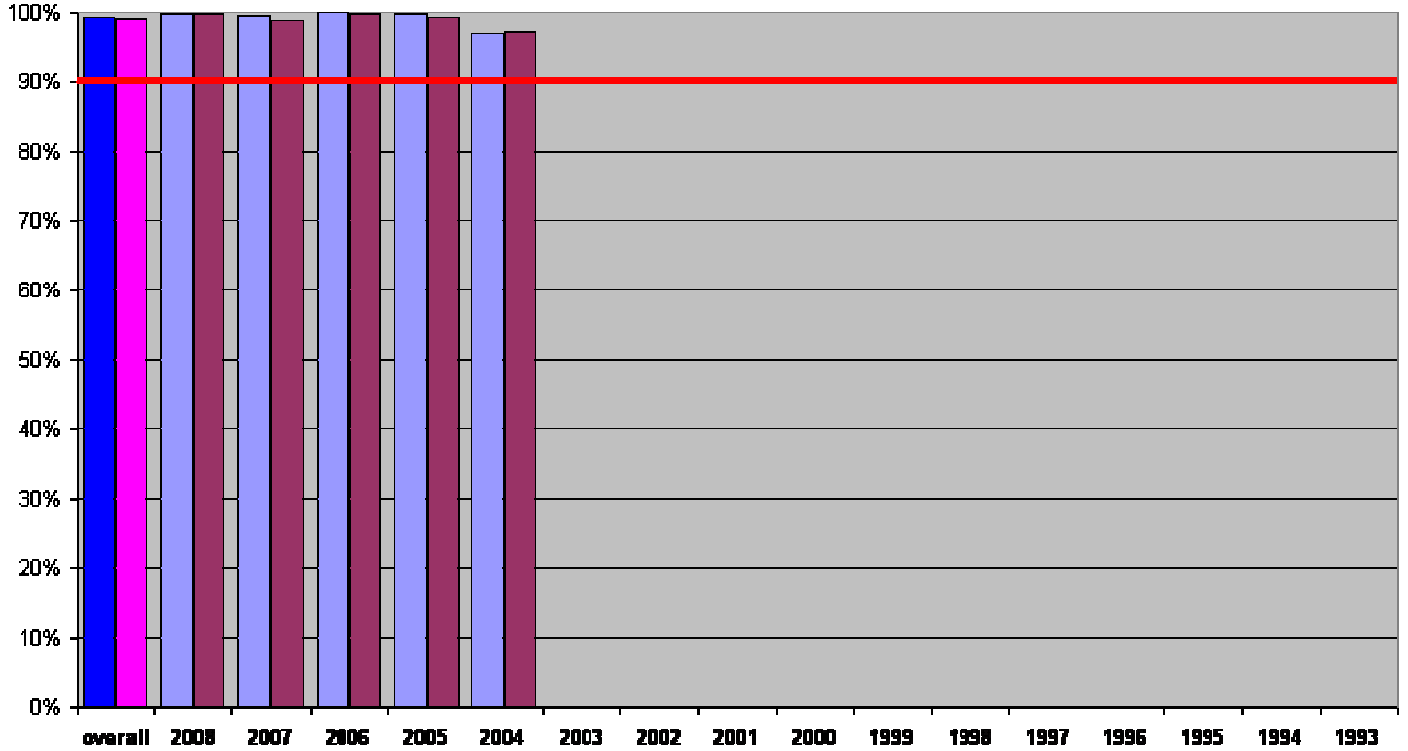
USDA UV-B Monitoring and Research Program Data Retrieval Success

■ TX01 97.8%
 ■ TX02 98.5%
 TEXAS - Big Bend National Park



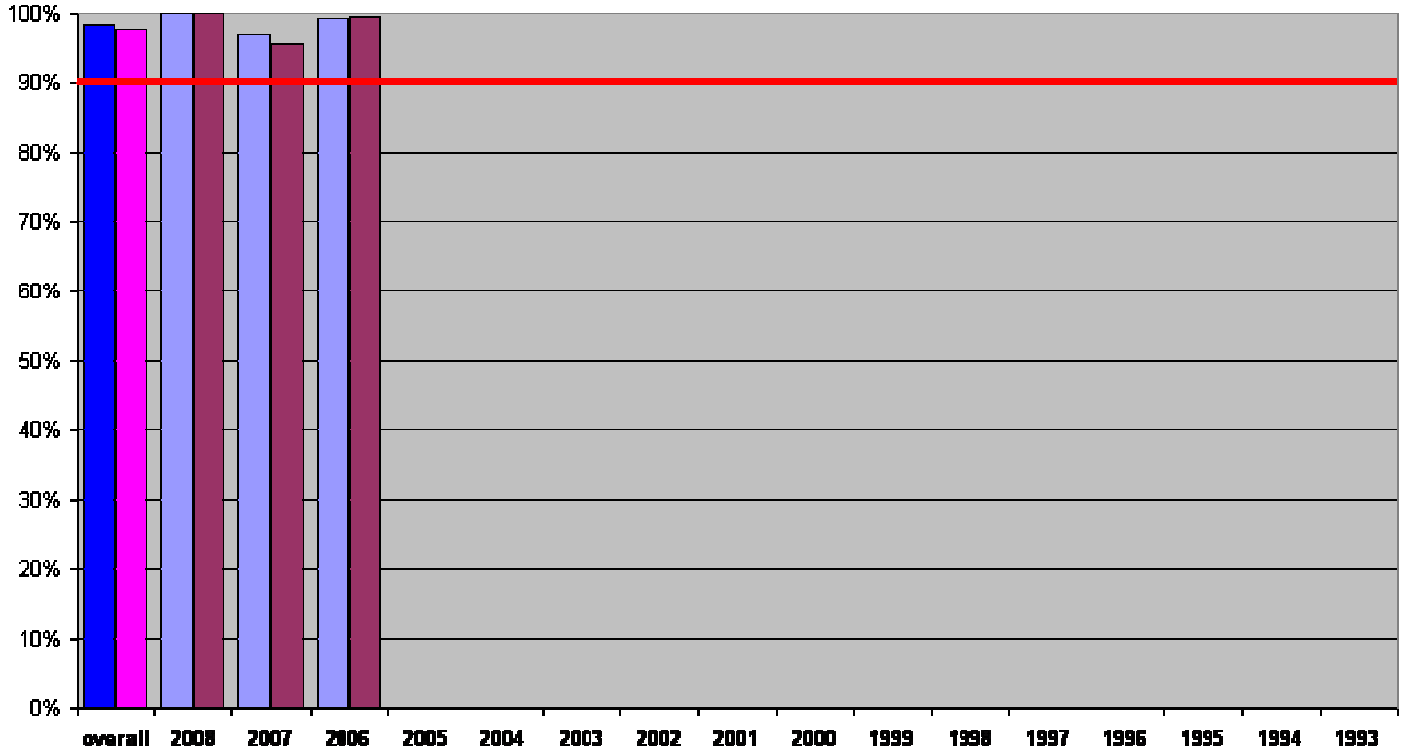
USDA UV-B Monitoring and Research Program Data Retrieval Success

■ TX21 99.2% ■ TX22 99.0% TEXAS - Texas Lutheran University



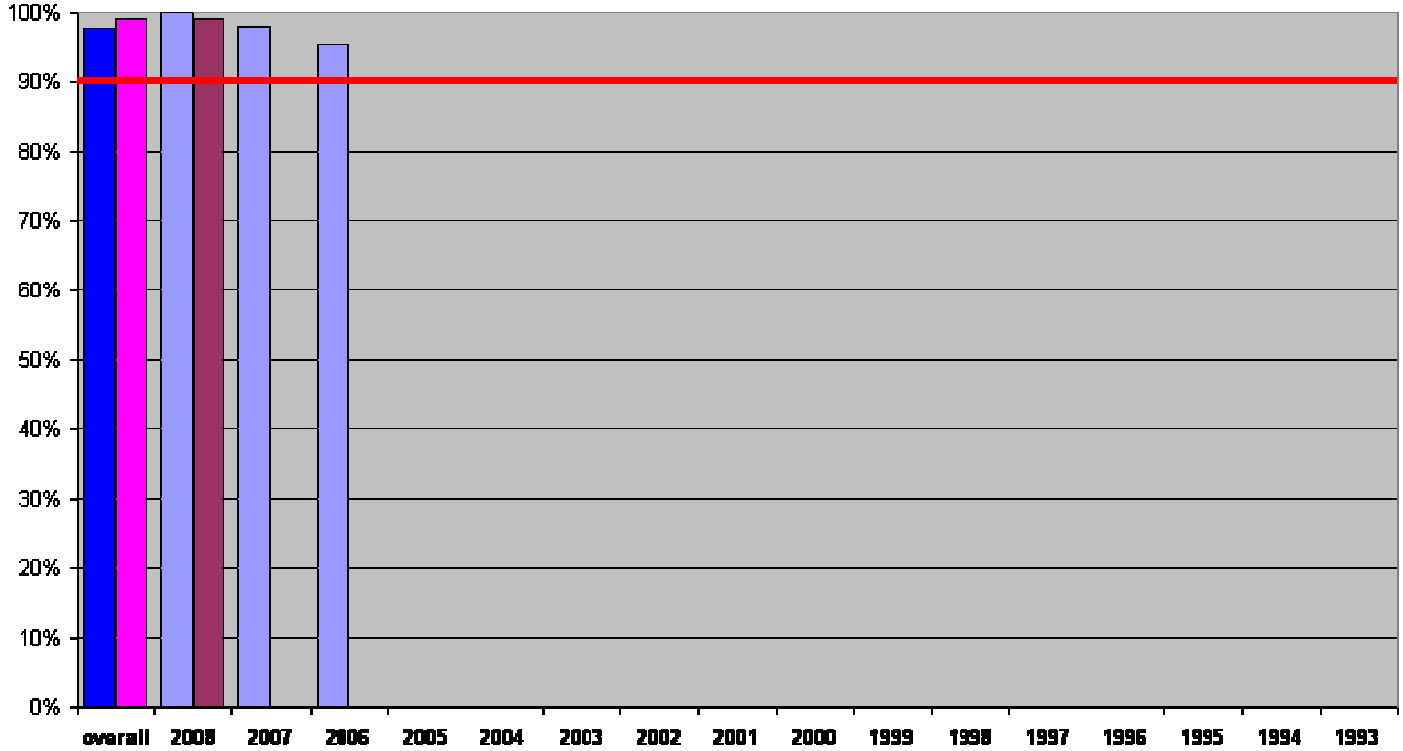
USDA UV-B Monitoring and Research Program Data Retrieval Success

■ TX41 98.4% ■ TX42 97.7% TEXAS - University of Houston



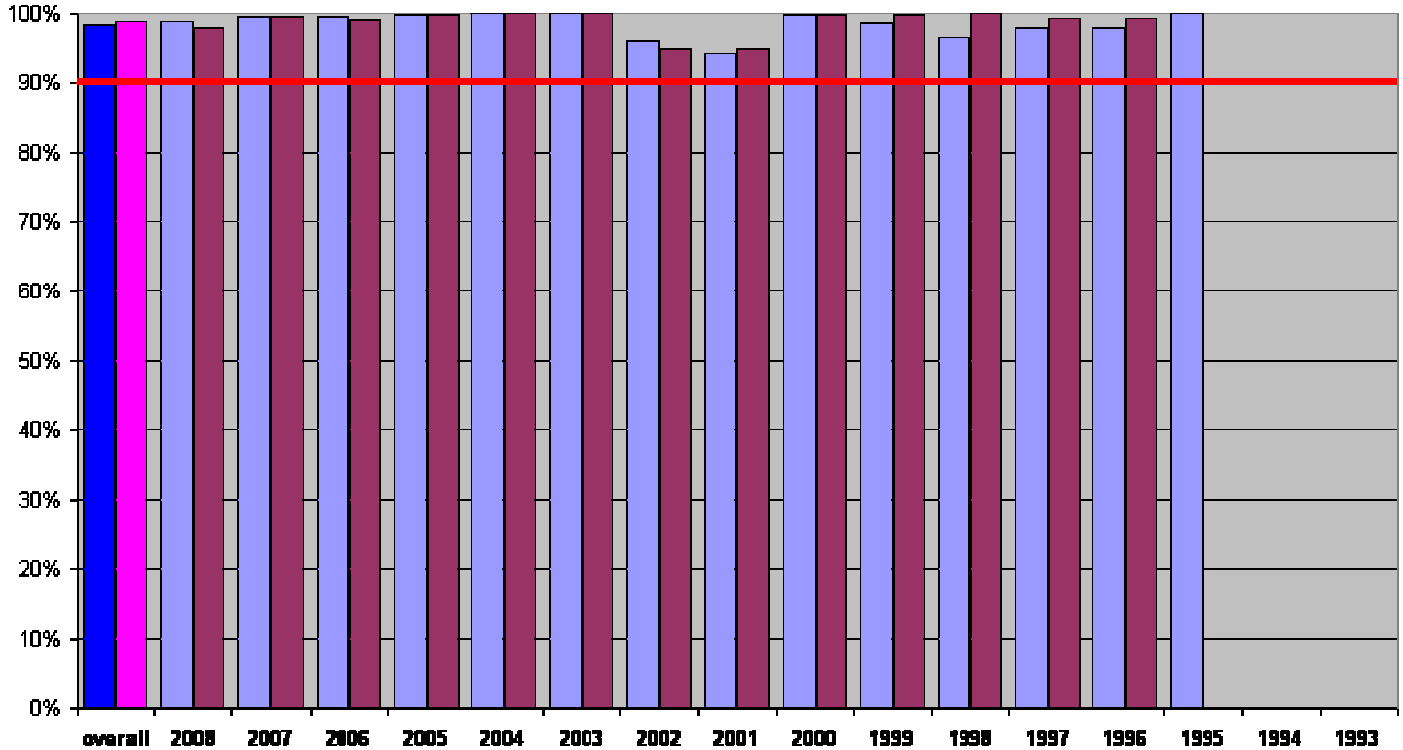
USDA UV-B Monitoring and Research Program Data Retrieval Success

■ TX51 97.8% ■ TX52 99.0% TEXAS - UTEP



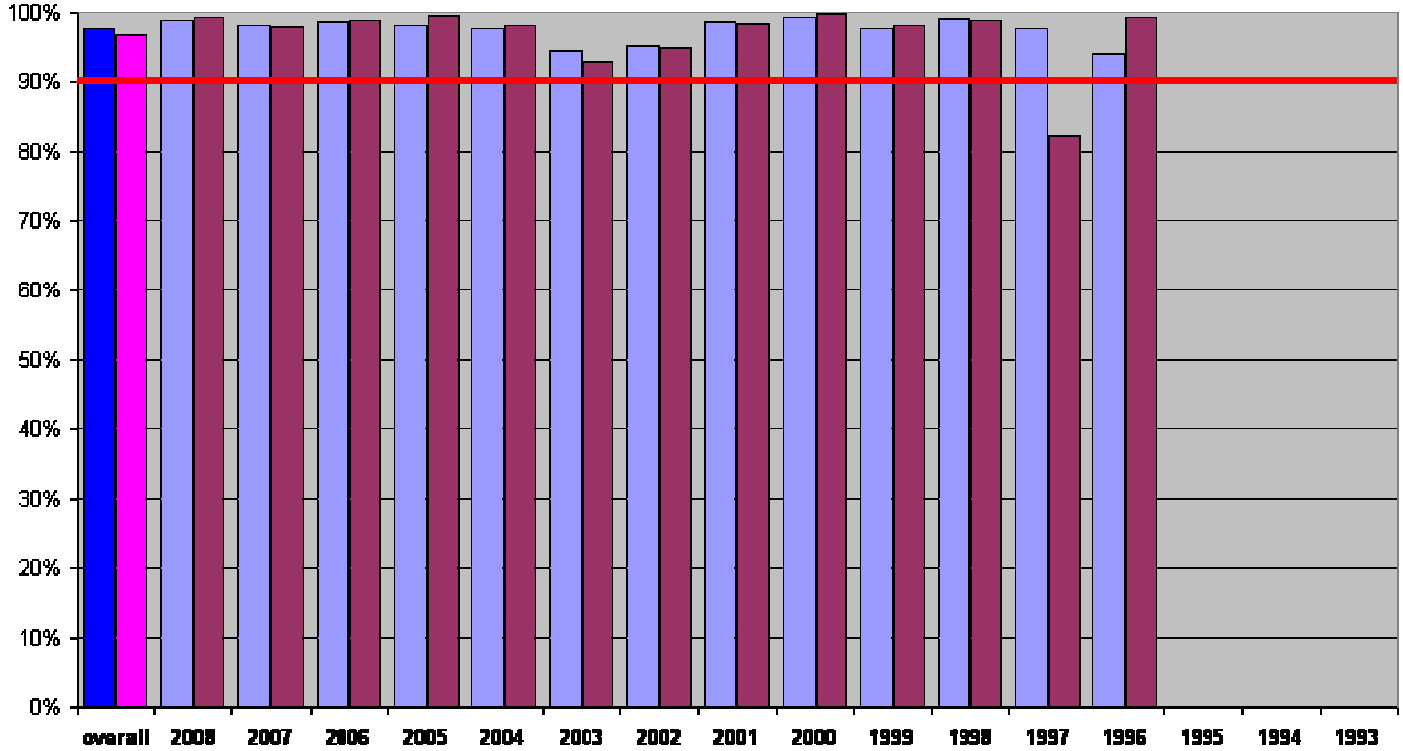
USDA UV-B Monitoring and Research Program Data Retrieval Success

■ UT01 98.3% ■ UT02 98.7% UTAH - USU Utah Climate Center



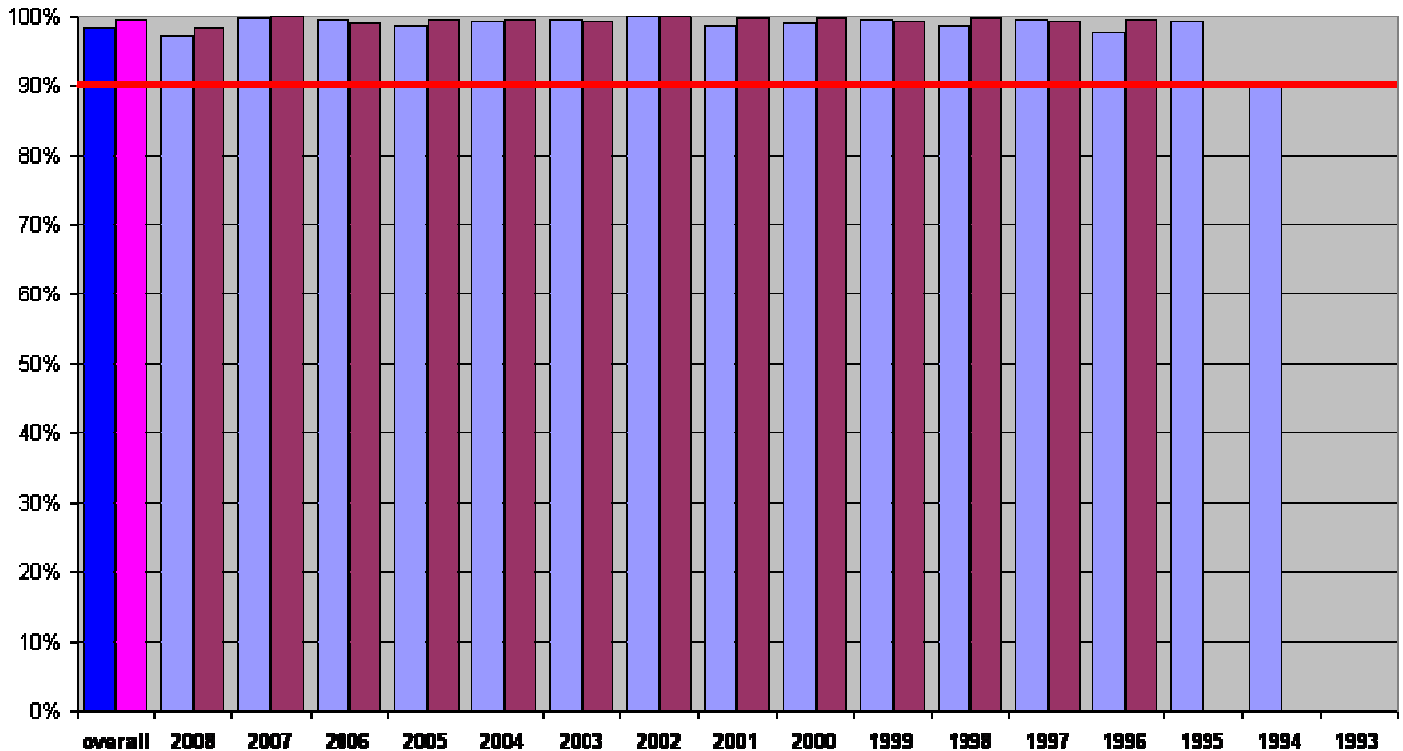
USDA UV-B Monitoring and Research Program Data Retrieval Success

VT01 97.7% VT02 96.6% VERMONT - UVM Proctor Maple Research Center



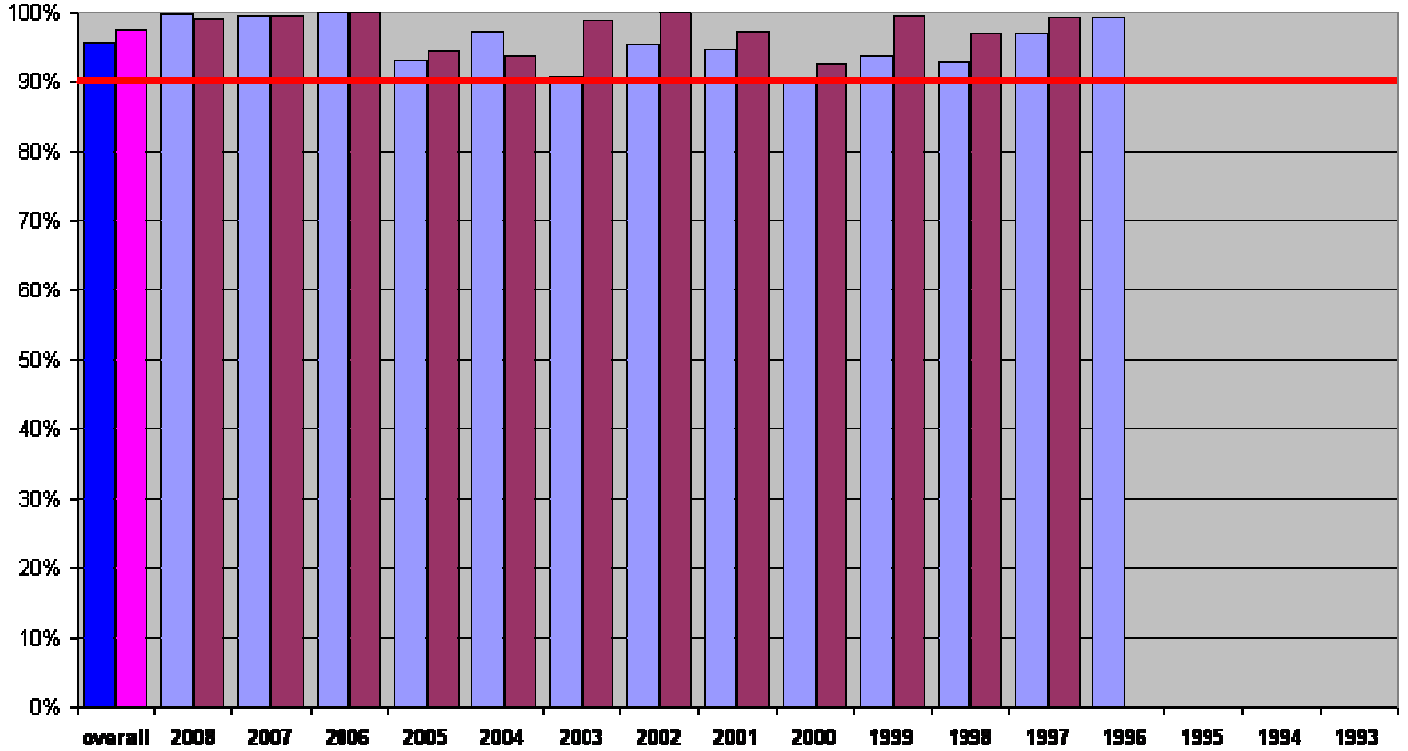
USDA UV-B Monitoring and Research Program Data Retrieval Success

WA01 93.4% WA02 99.4% WASHINGTON - WSU Palouse Conservation Field Station



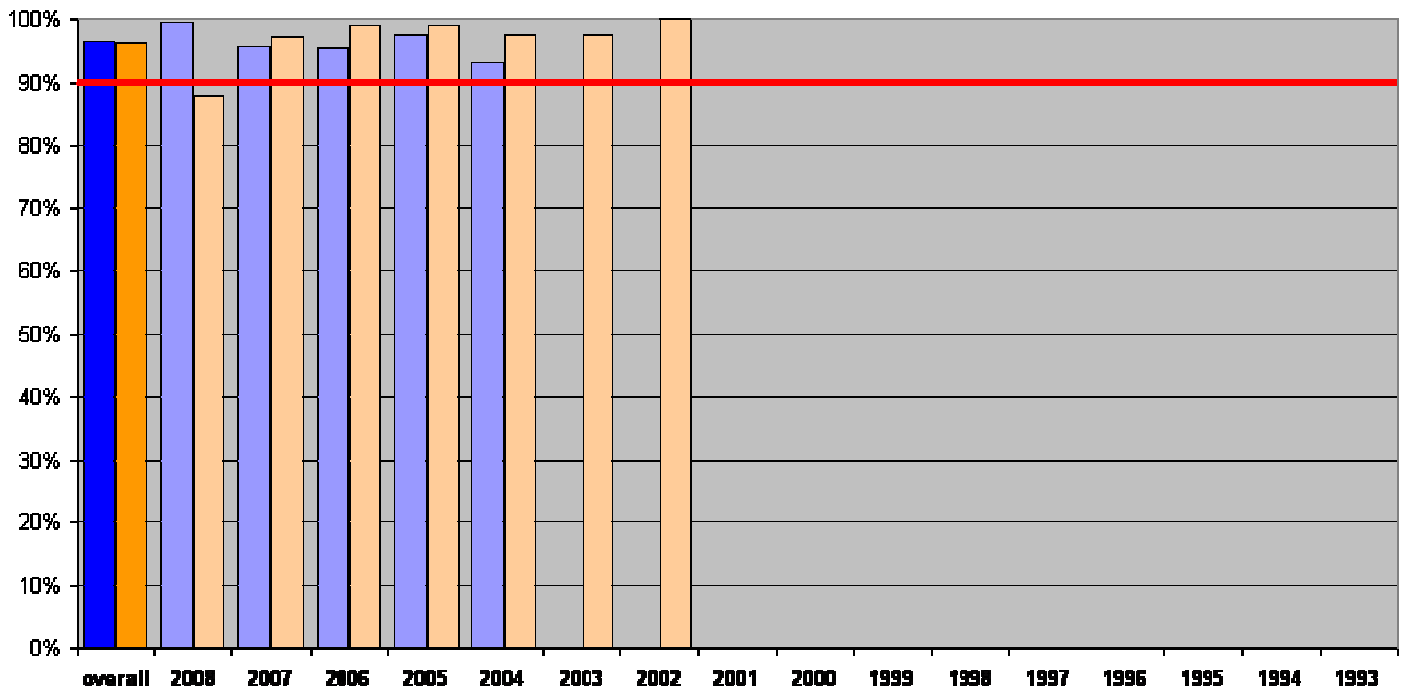
USDA UV-B Monitoring and Research Program Data Retrieval Success

■ WID1 95.4%
 ■ WID2 97.5%
 WISCONSIN - WDNR Lake Dubay site



USDA UV-B Monitoring and Research Program Data Retrieval Success

■ TX31 96.4% TEXAS - Texas Lutheran University - using LED photoreceptors
■ NASA 96.1% various locations = GSFC+MLO+UAE+Greece+JPL+Bolivia+China

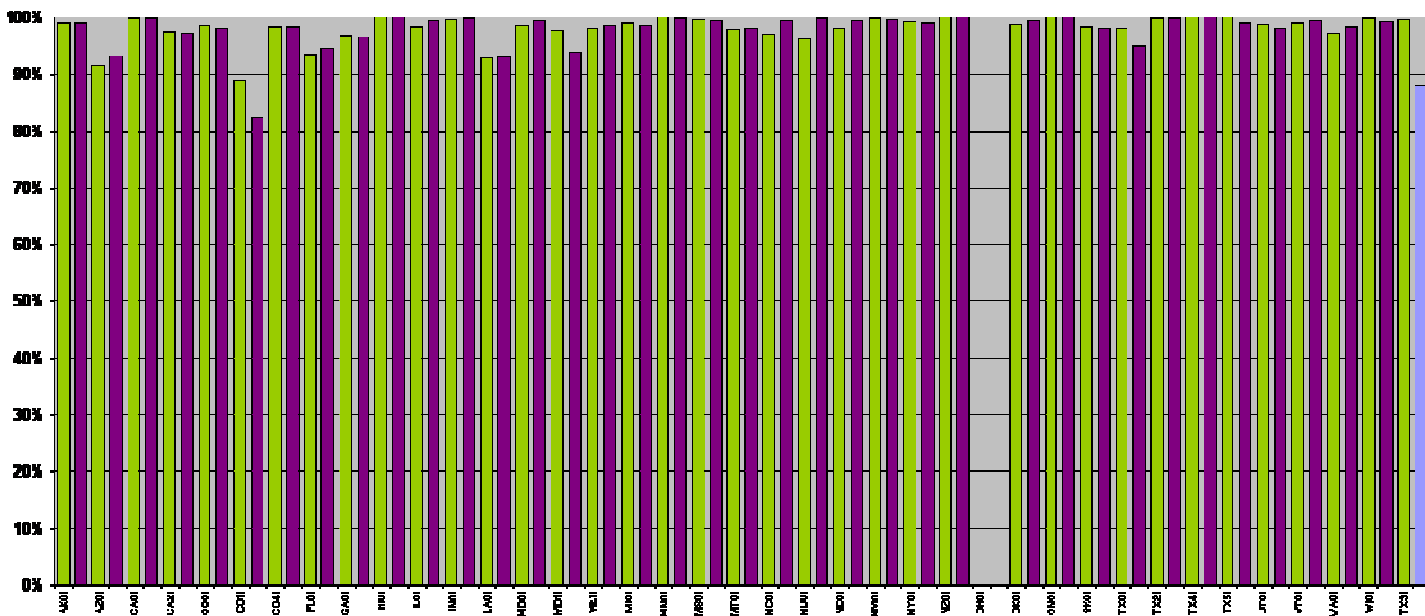


Data retrieval by year: shows the overall retrieval success by site for all years that a site has been in operation. The purple bar is for the UV-MFRSR instrument, the green bar is for the vis_MFRSR instrument.

DATA RETRIEVAL SUCCESS - USDA UV-B Monitoring and Research Program - 1993 through 2008



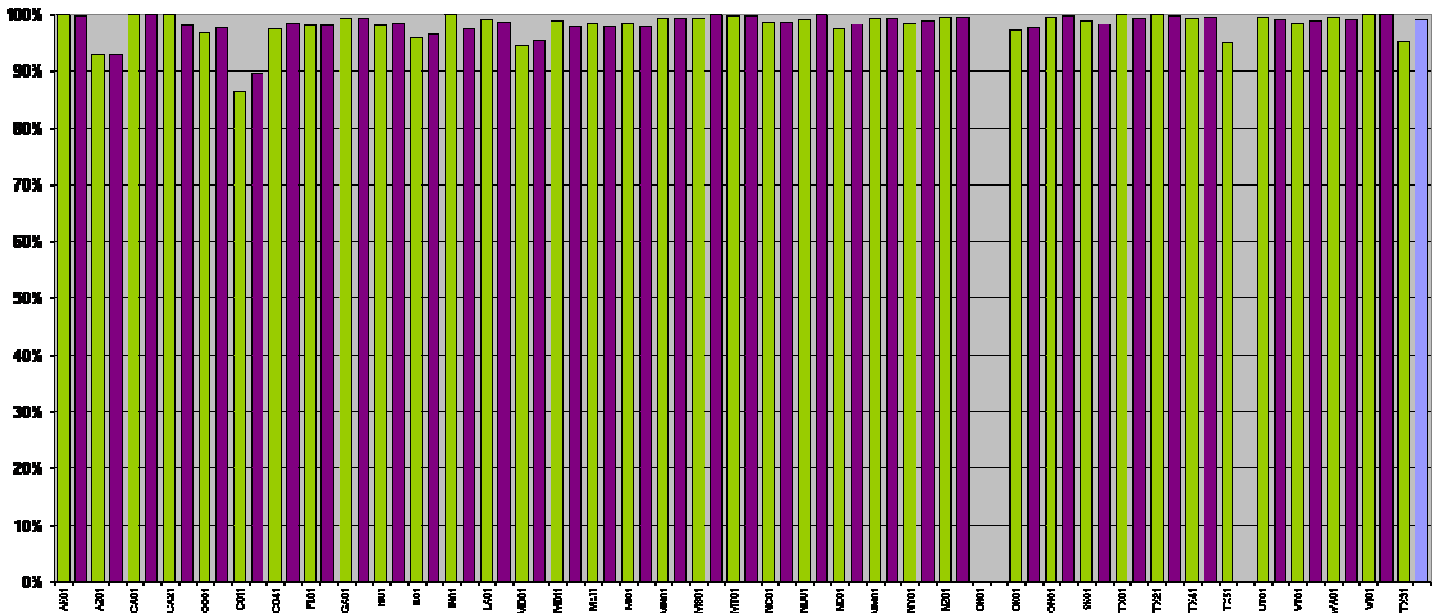
DATA RETRIEVAL SUCCESS - USDA UV-B Monitoring and Research Program - ALL SITES for 2008



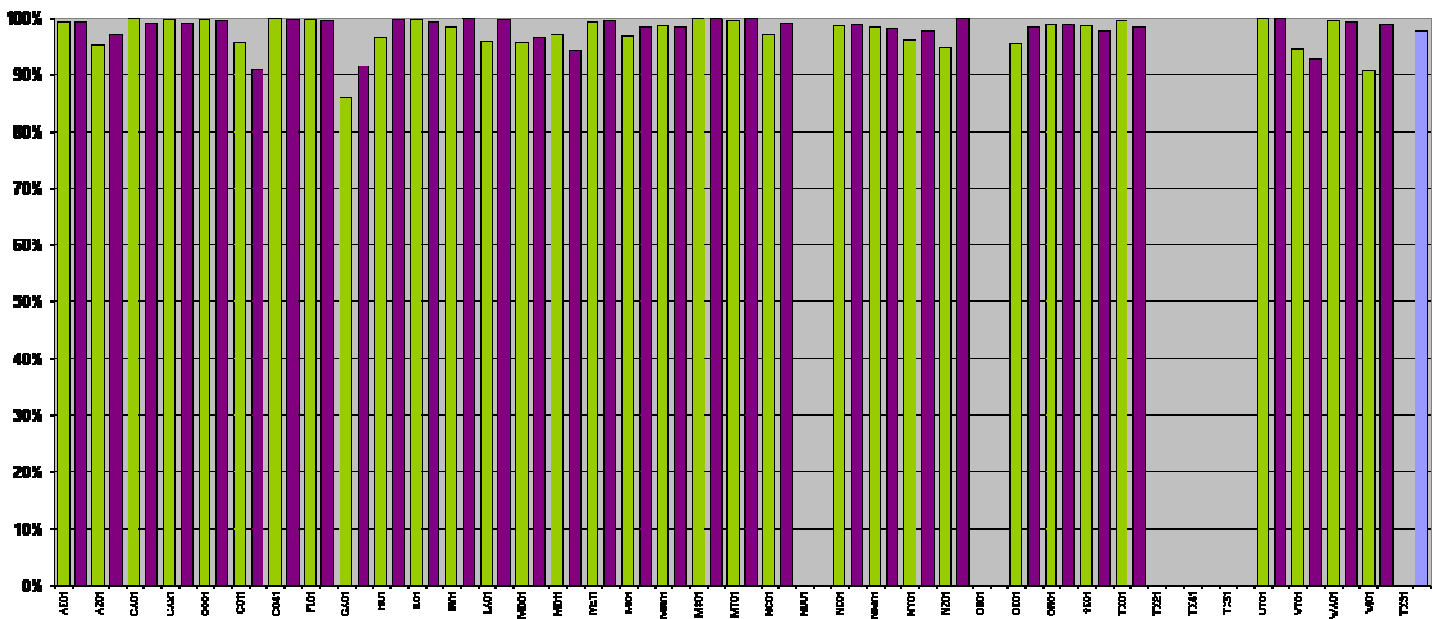
DATA RETRIEVAL SUCCESS - USDA UV-B Monitoring and Research Program - ALL SITES for 2007



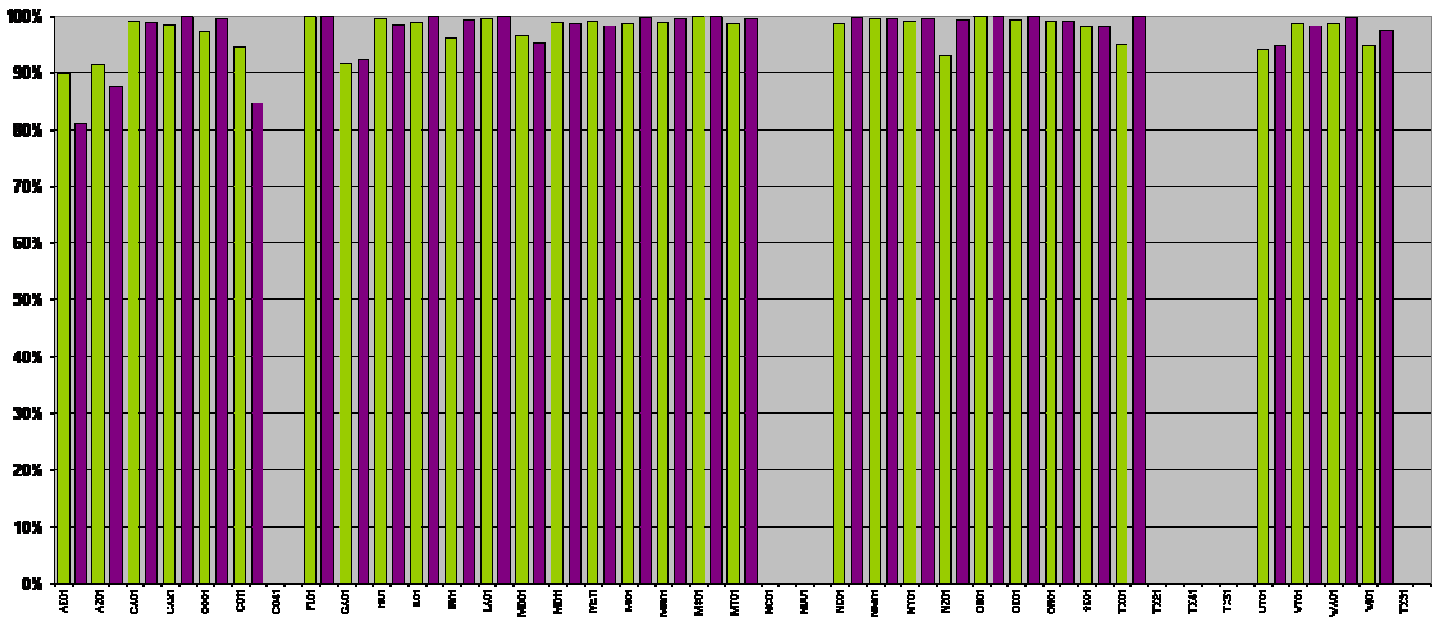
DATA RETRIEVAL SUCCESS - USDA UV-B Monitoring and Research Program - ALL SITES for 2006



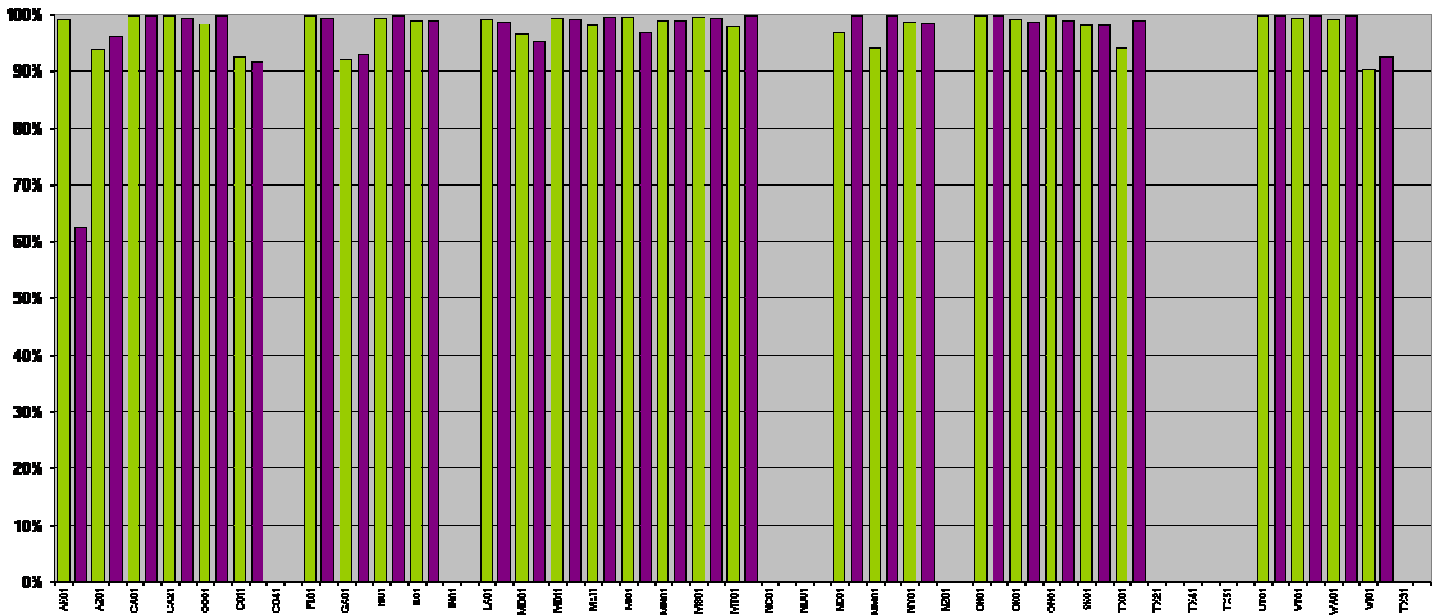
DATA RETRIEVAL SUCCESS - USDA UV-B Monitoring and Research Program - ALL SITES for 2003



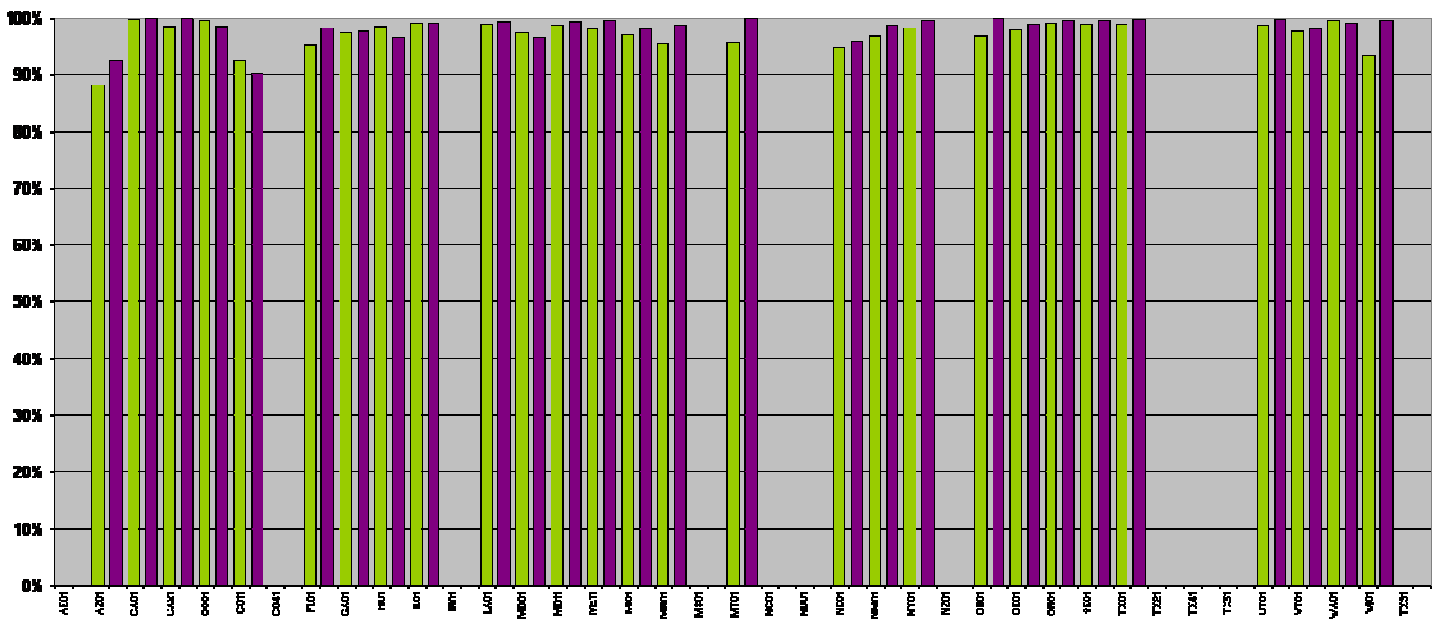
DATA RETRIEVAL SUCCESS - USDA UV-B Monitoring and Research Program - ALL SITES for 2001



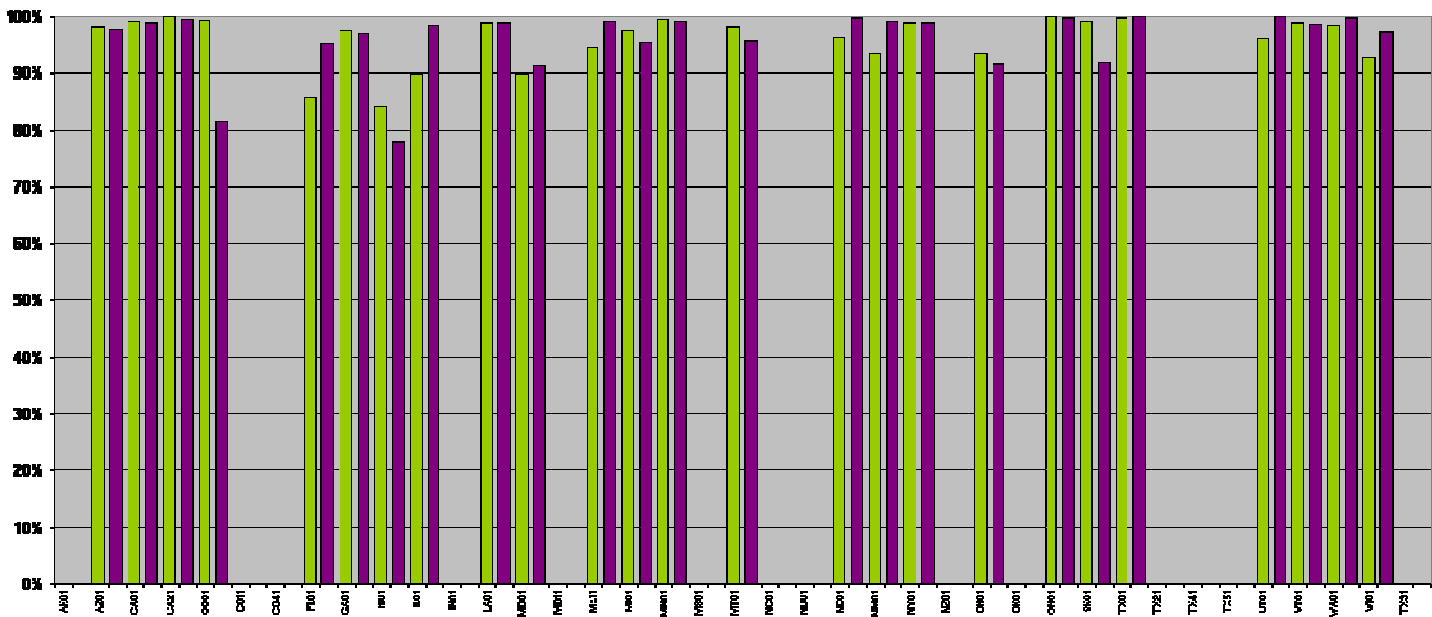
DATA RETRIEVAL SUCCESS - USDA UV-B Monitoring and Research Program - ALL SITES for 2000



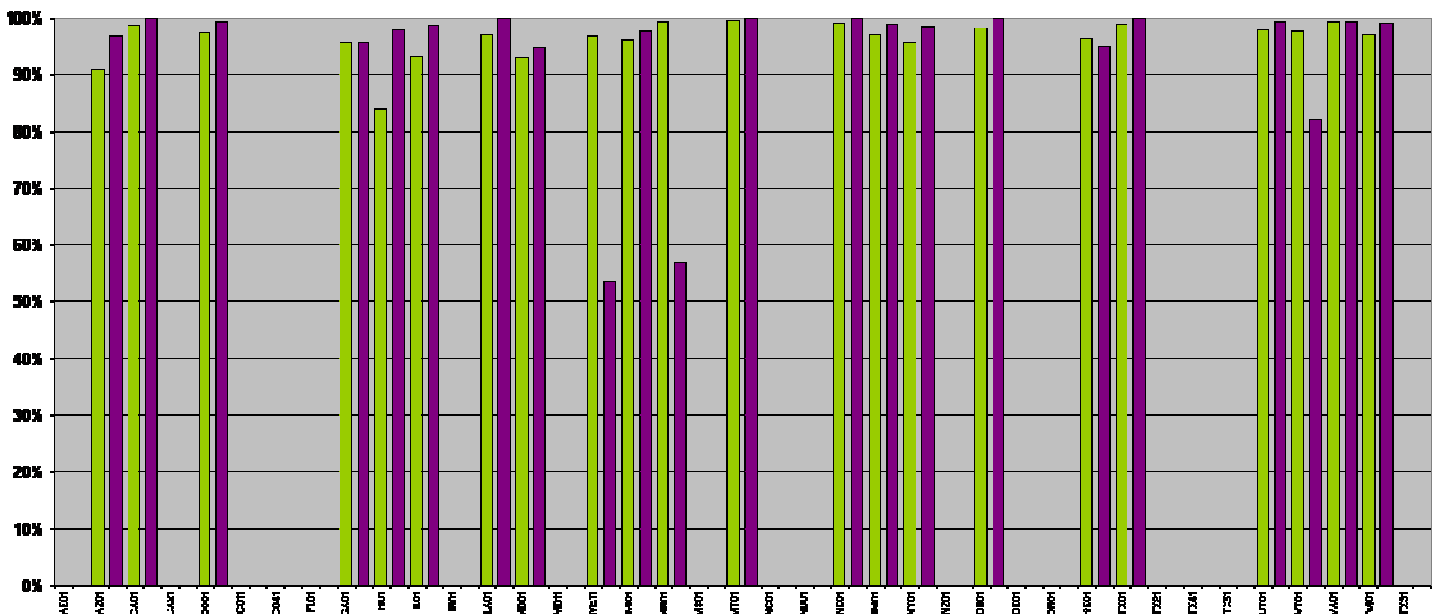
DATA RETRIEVAL SUCCESS - USDA UV-B Monitoring and Research Program - ALL SITES for 1999



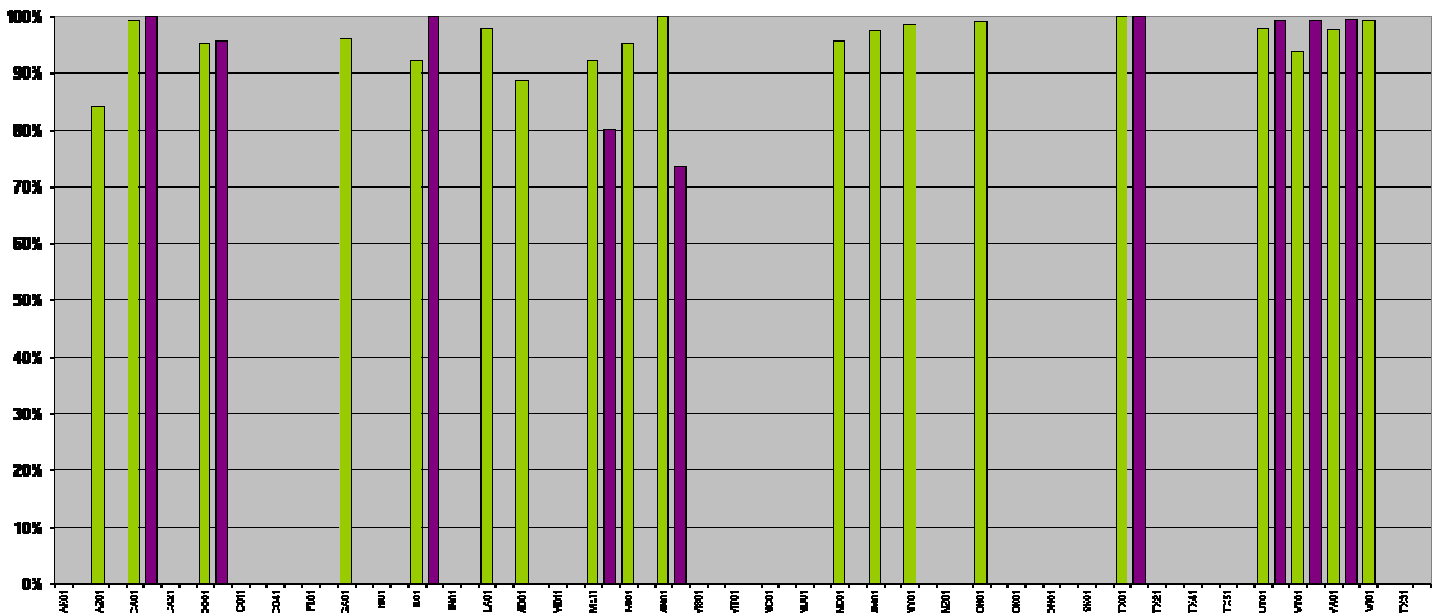
DATA RETRIEVAL SUCCESS - USDA UV-B Monitoring and Research Program - ALL SITES for 1998



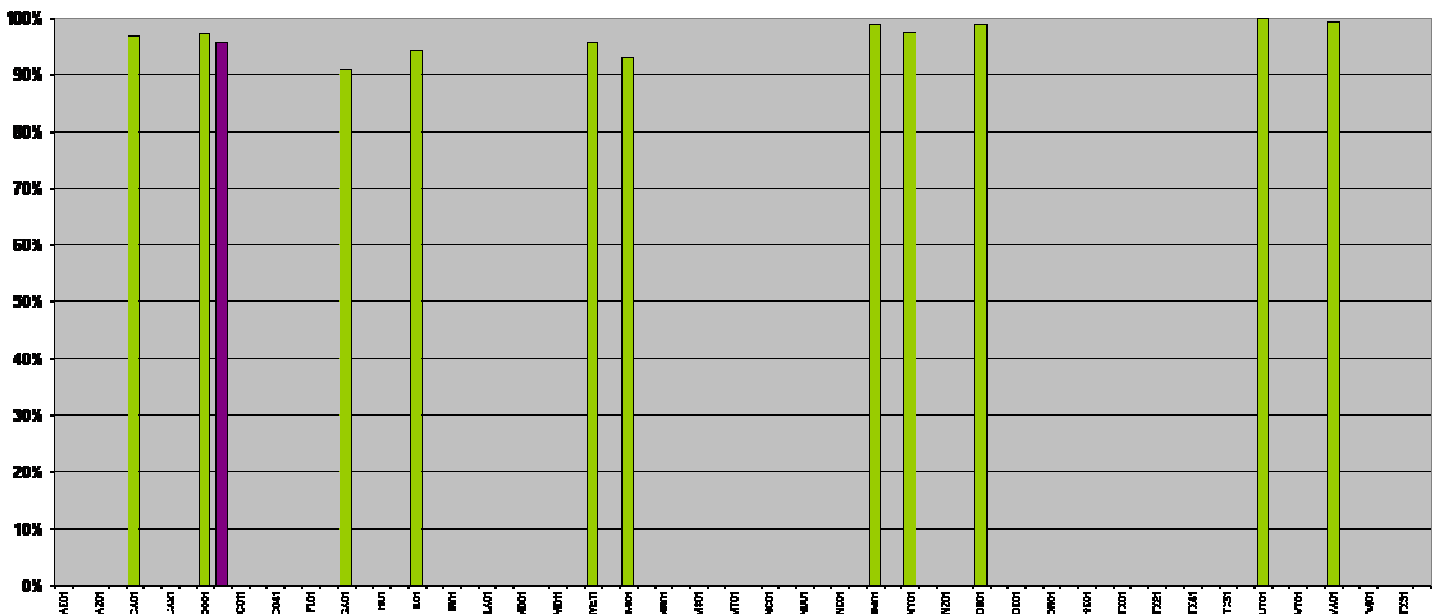
DATA RETRIEVAL SUCCESS - USDA UV-B Monitoring and Research Program - ALL SITES for 1997



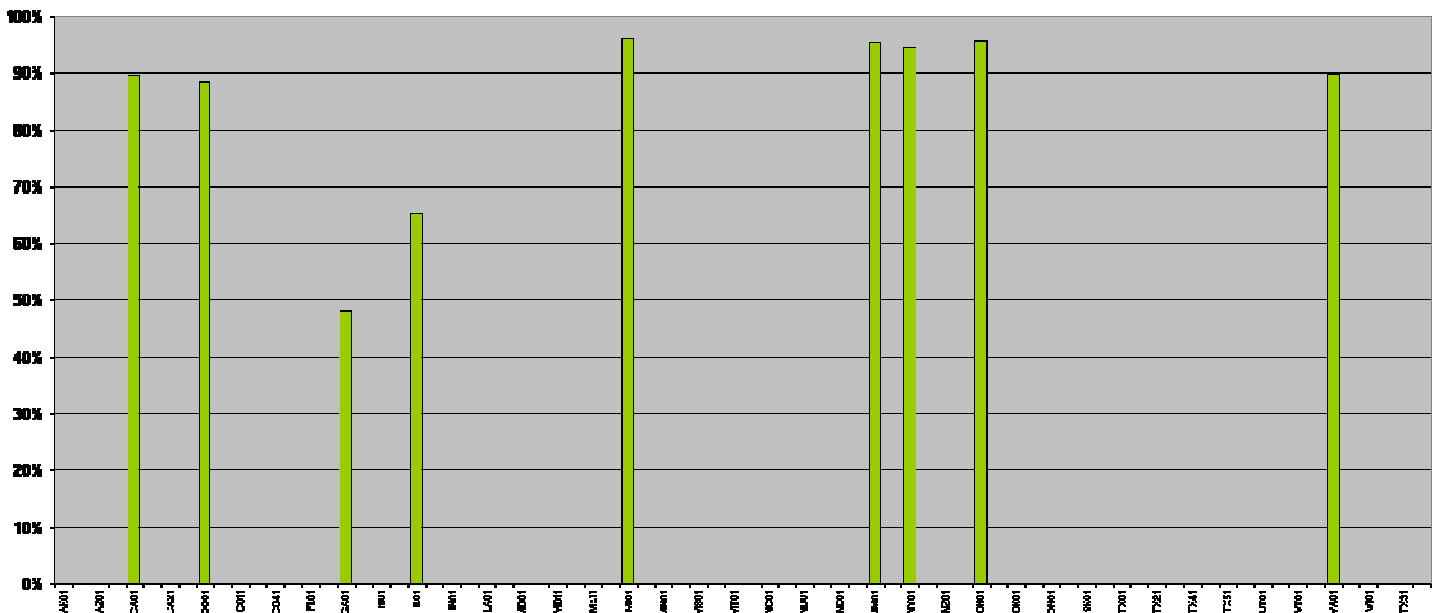
DATA RETRIEVAL SUCCESS - USDA UV-B Monitoring and Research Program - ALL SITES for 1996



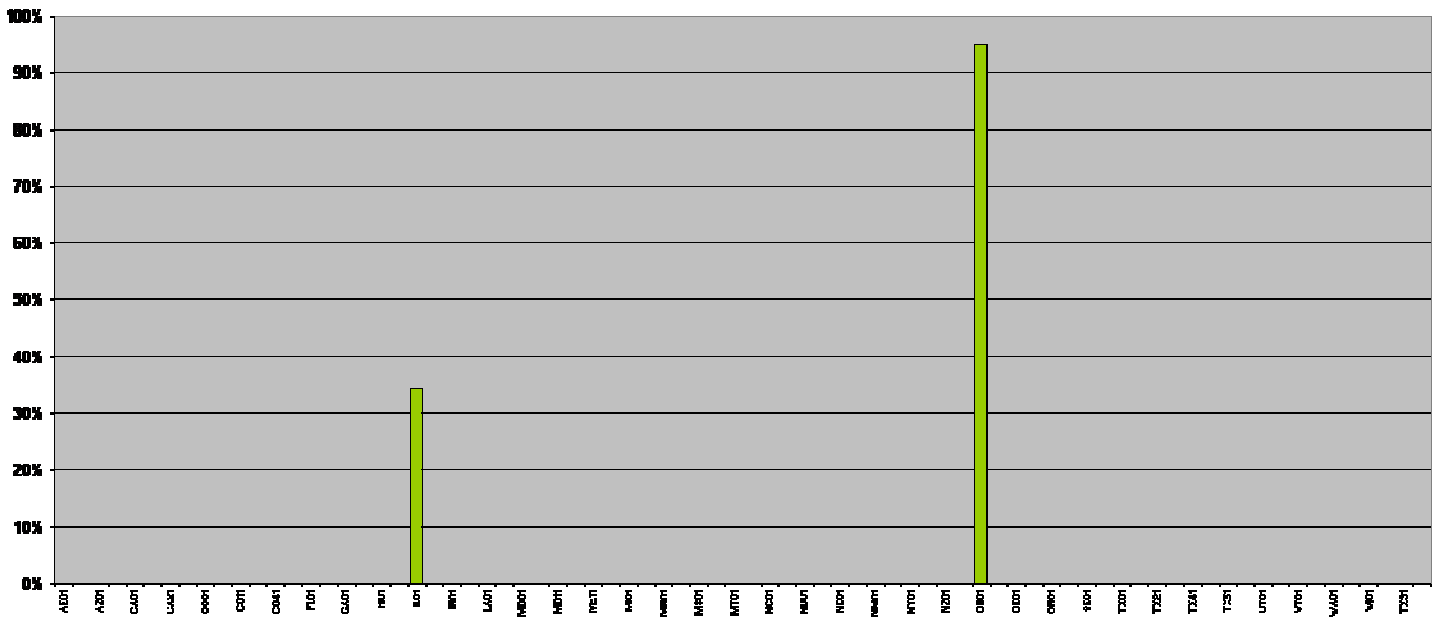
DATA RETRIEVAL SUCCESS - USDA UV-B Monitoring and Research Program - ALL SITES for 1995



DATA RETRIEVAL SUCCESS - USDA UV-B Monitoring and Research Program - ALL SITES for 1994

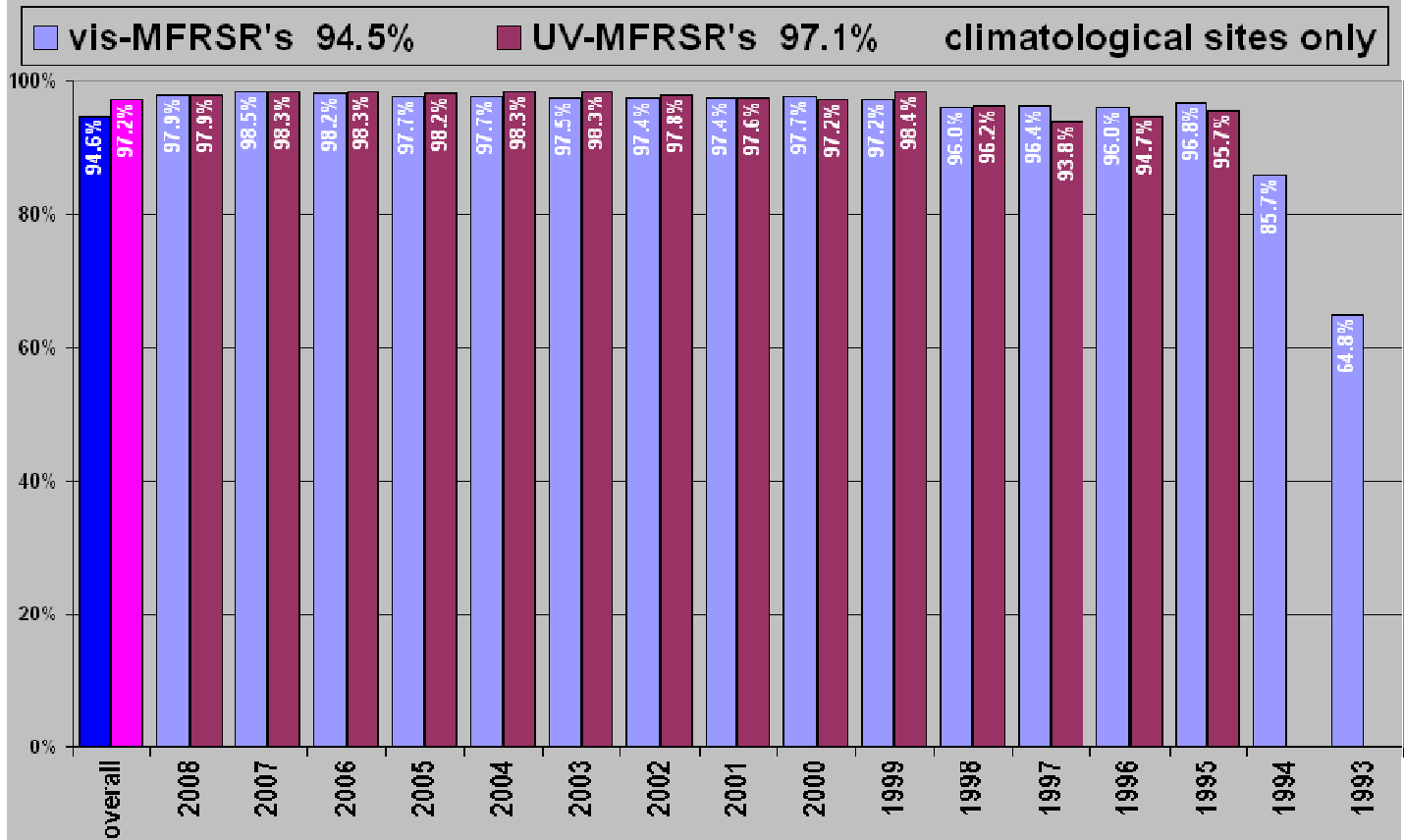


DATA RETRIEVAL SUCCESS - USDA UV-B Monitoring and Research Program - ALL SITES for 1993



Climatological Sites Only. This chart combines the retrieval percentages for both vis-MFRSR and UV-MFRSR instruments by year and cumulatively.

Data Retrieval Success



OVERALL DATA RETRIEVAL SUCCESS

climatological sites only

